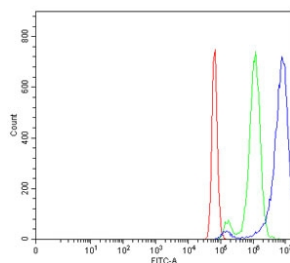


## ROR beta Antibody / RORB (RQ6921)

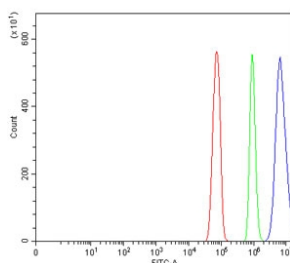
Catalog No.	Formulation	Size
RQ6921	0.5mg/ml if reconstituted with 0.2ml sterile DI water	100 ug

[Bulk quote request](#)

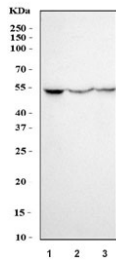
<b>Availability</b>	1-3 business days
<b>Species Reactivity</b>	Human, Mouse, Rat
<b>Format</b>	Antigen affinity purified
<b>Host</b>	Rabbit
<b>Clonality</b>	Polyclonal (rabbit origin)
<b>Isotype</b>	Rabbit IgG
<b>Purity</b>	Antigen affinity purified
<b>Buffer</b>	Lyophilized from 1X PBS with 2% Trehalose
<b>UniProt</b>	Q92753
<b>Applications</b>	Western Blot : 0.5-1 ug/ml Flow Cytometry : 1-3ug/million cells Direct ELISA : 0.1-0.5ug/ml
<b>Limitations</b>	This ROR beta antibody is available for research use only.



Flow cytometry testing of mouse Neuro-2a cells with ROR beta antibody at 1ug/million cells (blocked with goat sera); Red=cells alone, Green=isotype control, Blue= ROR beta antibody.



Flow cytometry testing of rat RH35 cells with ROR beta antibody at 1ug/million cells (blocked with goat sera); Red=cells alone, Green=isotype control, Blue= ROR beta antibody.



Western blot testing of 1) human HepG2, 2) mouse brain and 3) rat brain tissue lysate with ROR beta antibody. Predicted molecular weight ~53 kDa.

## Description

RAR-related orphan receptor beta (ROR-beta), also known as NR1F2 (nuclear receptor subfamily 1, group F, member 2) is a nuclear receptor that in humans is encoded by the RORB gene. The protein encoded by this gene is a member of the NR1 subfamily of nuclear hormone receptors. It is a DNA-binding protein that can bind as a monomer or as a homodimer to hormone response elements upstream of several genes to enhance the expression of those genes. The encoded protein has been shown to interact with NM23-2, a nucleoside diphosphate kinase involved in organogenesis and differentiation, and to help regulate the expression of some genes involved in circadian rhythm.

## Application Notes

Optimal dilution of the ROR beta antibody should be determined by the researcher.

## Immunogen

Recombinant human ROR beta/RORB protein (amino acids M1-K470) was used as the immunogen for the ROR beta antibody.

## Storage

After reconstitution, the ROR beta antibody can be stored for up to one month at 4°C. For long-term, aliquot and store at -20°C. Avoid repeated freezing and thawing.