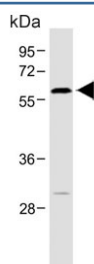


## ROR alpha Antibody / RORA (F54563)

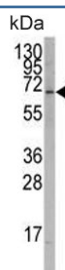
Catalog No.	Formulation	Size
F54563-0.4ML	In 1X PBS, pH 7.4, with 0.09% sodium azide	0.4 ml
F54563-0.08ML	In 1X PBS, pH 7.4, with 0.09% sodium azide	0.08 ml

[Bulk quote request](#)

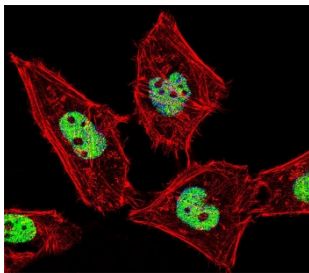
<b>Availability</b>	1-3 business days
<b>Species Reactivity</b>	Human
<b>Format</b>	Purified
<b>Clonality</b>	Polyclonal (rabbit origin)
<b>Isotype</b>	Rabbit Ig
<b>Purity</b>	Antigen affinity purified
<b>UniProt</b>	P35398
<b>Localization</b>	Nuclear
<b>Applications</b>	Immunofluorescence : 1:25 Western Blot : 1:500-1:2000 Flow Cytometry : 1:25 (1x10 <sup>6</sup> cells)
<b>Limitations</b>	This ROR alpha antibody is available for research use only.



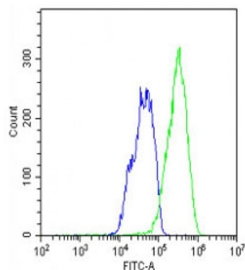
Western blot testing of human brain lysate with ROR alpha antibody. Predicted molecular weight ~59 kDa.



Western blot testing of human A2058 cell lysate with ROR alpha antibody. Predicted molecular weight ~59 kDa.



Immunofluorescent staining of fixed and permeabilized human HeLa cells with ROR alpha antibody (green), DAPI nuclear stain (blue) and anti-Actin (red).



Flow cytometry testing of fixed and permeabilized human HepG2 cells with ROR alpha antibody; Blue=isotype control, Green= ROR alpha antibody.

## Description

RORA is a member of the NR1 subfamily of nuclear hormone receptors. It can bind as a monomer or as a homodimer to hormone response elements upstream of several genes to enhance the expression of those genes. The specific functions of this protein are not known, but it has been shown to interact with NM23-2, a nucleoside diphosphate kinase involved in organogenesis and differentiation, as well as with NM23-1, the product of a tumor metastasis suppressor candidate gene.

## Application Notes

The stated application concentrations are suggested starting points. Titration of the ROR alpha antibody may be required due to differences in protocols and secondary/substrate sensitivity.

## Immunogen

A portion of amino acids 193-222 from the human protein was used as the immunogen for the ROR alpha antibody.

## Storage

Aliquot the ROR alpha antibody and store frozen at -20°C or colder. Avoid repeated freeze-thaw cycles.