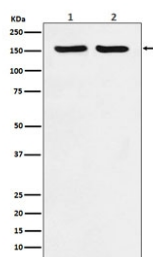


ROCK2 Antibody [clone ACDH-18] (RQ4771)

Catalog No.	Formulation	Size
RQ4771	Antibody in PBS with 0.02% sodium azide, 50% glycerol and 0.4-0.5mg/ml BSA	100 ul

[Bulk quote request](#)

Availability	1-2 weeks
Species Reactivity	Human
Format	Purified
Clonality	Rabbit Monoclonal
Isotype	Rabbit IgG
Clone Name	ACDH-18
Purity	Affinity purified
UniProt	O75116
Applications	Western Blot : 1:1000-1:5000
Limitations	This ROCK2 antibody is available for research use only.



Western blot testing of 1) human HeLa and 2) mouse RAW264 lysate with ROCK2 antibody. Predicted molecular weight ~161 kDa.

Description

'Rho-associated protein kinase 2' (ROCK2) is a protein kinase which is a key regulator of actin cytoskeleton and cell polarity. Involved in regulation of smooth muscle contraction, actin cytoskeleton organization, stress fiber and focal adhesion formation, neurite retraction, cell adhesion and motility via phosphorylation of ADD1, BRCA2, CNN1, EZR, DPYSL2, EP300, MSN, MYL9/MLC2, NPM1, RDX, PPP1R12A and VIM. [UniProt]

Application Notes

Optimal dilution of the ROCK2 antibody should be determined by the researcher.

Immunogen

A synthetic peptide specific to human ROCK2 was used as the immunogen for the ROCK2 antibody.

Storage

Store the ROCK2 antibody at -20oC.