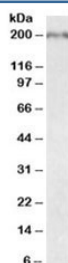


## Robo1 Antibody (R35314)

Catalog No.	Formulation	Size
R35314-100UG	0.5 mg/ml in 1X TBS, pH7.3, with 0.5% BSA (US sourced) and 0.02% sodium azide	100 ug

[Bulk quote request](#)

Availability	1-3 business days
Species Reactivity	Mouse
Predicted Reactivity	Rat, Dog
Format	Antigen affinity purified
Host	Goat
Clonality	Polyclonal (goat origin)
Isotype	Goat Ig
Purity	Antigen affinity
Gene ID	19876
Applications	Western Blot : 0.05-0.2ug/ml ELISA (peptide) LOD : 1:128000
Limitations	This Robo1 antibody is available for research use only.



Western blot testing of fetal mouse brain lysate with Robo1 antibody at 0.05ug/ml. Predicted molecular weight (mouse): ~176kDa but may be observed at higher molecular weights due to glycosylation.

## Description

Additional name(s) for this target protein: Roundabout homolog 1, DUTT1

## Application Notes

Optimal dilution of the Robo1 antibody should be determined by the researcher.

## Immunogen

Amino acids QKARPAKKQKHQ were used as the immunogen for this Robo1 antibody.

## Storage

Aliquot and store the Robo1 antibody at -20oC.