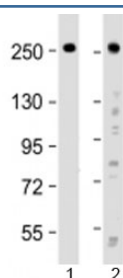


ROBO1 Antibody (F53865)

Catalog No.	Formulation	Size
F53865-0.05ML	In 1X PBS, pH 7.4, with 0.09% sodium azide	0.05 ml

Bulk quote request

Availability	1-3 business days
Species Reactivity	Human
Format	Antigen affinity purified
Clonality	Polyclonal (rabbit origin)
Isotype	Rabbit Ig
Purity	Antigen affinity
UniProt	Q9Y6N7
Applications	Western Blot : 1:1000-1:2000
Limitations	This ROBO1 antibody is available for research use only.



Western blot testing of human 1) HeLa and 2) SH-SY5Y cell lysate with ROBO1 antibody at 1:2000. Expected molecular weight: ~181/250 kDa (unmodified/glycosylated).

Description

Roundabout homolog 1 is the receptor for SLIT1 and SLIT2 which are thought to act as molecular guidance cue in cellular migration, including axonal navigation at the ventral midline of the neural tube and projection of axons to different regions during neuronal development. In axon growth cones, the silencing of the attractive effect of NTN1 by SLIT2 may require the formation of a ROBO1-DCC complex. May be required for lung development.

Application Notes

Titration of the ROBO1 antibody may be required due to differences in protocols and substrate sensitivity.

Immunogen

A portion of amino acids 1097-1130 from the human protein was used as the immunogen for the ROBO1 antibody.

Storage

Aliquot the ROBO1 antibody and store frozen at -20oC or colder. Avoid repeated freeze-thaw cycles.