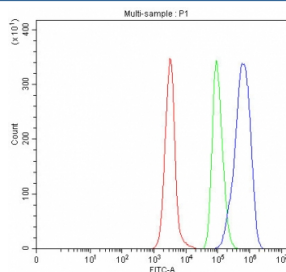


Ro60 Antibody / SS-A / TROVE2 (RQ7591)

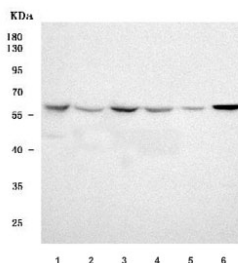
Catalog No.	Formulation	Size
RQ7591	0.5mg/ml if reconstituted with 0.2ml sterile DI water	100 ug

[Bulk quote request](#)

Availability	1-3 business days
Species Reactivity	Human, Rat
Format	Antigen affinity purified
Host	Rabbit
Clonality	Polyclonal (rabbit origin)
Isotype	Rabbit IgG
Purity	Antigen affinity purified
Buffer	Lyophilized from 1X PBS with 2% Trehalose
UniProt	P10155
Applications	Western Blot : 0.5-1ug/ml Flow Cytometry : 1-3ug/million cells Direct ELISA : 0.1-0.5ug/ml
Limitations	This Ro60 antibody is available for research use only.



Flow cytometry testing of human Daudi cells with Ro60 antibody at 1ug/million cells (blocked with goat sera); Red=cells alone, Green=isotype control, Blue= Ro60 antibody.



Western blot testing of 1) human MCF7, 2) human Jurkat, 3) human 293T, 4) human HeLa, 5) rat thymus and 6) rat spleen tissue lysate with Ro60 antibody. Predicted molecular weight ~61 kDa.

Description

Enables RNA binding activity. Involved in cellular response to interferon-alpha and regulation of gene expression. Located in cytosol and nucleoplasm. Part of ribonucleoprotein complex. The cDNA that encodes the 60-kD Ro/SSA autoantigen recognized by autoantibodies in certain lupus erythematosus (152700) and Sjogren syndrome (270150) sera was cloned and sequenced by Deutscher et al. (1988) and confirmed with minor differences by Ben-Chetrit et al. (1989).

Application Notes

Optimal dilution of the Ro60 antibody should be determined by the researcher.

Immunogen

E. coli-derived recombinant human protein (amino acids K88-M419) was used as the immunogen for the Ro60 antibody.

Storage

After reconstitution, the Ro60 antibody can be stored for up to one month at 4oC. For long-term, aliquot and store at -20oC. Avoid repeated freezing and thawing.