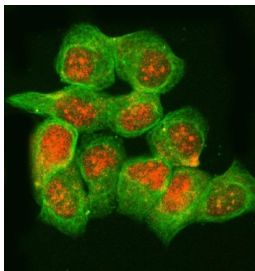


RNase H2 subunit B Antibody / RNASEH2B (RQ7615)

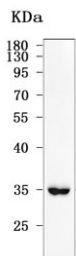
Catalog No.	Formulation	Size
RQ7615	0.5mg/ml if reconstituted with 0.2ml sterile DI water	100 ug

Bulk quote request

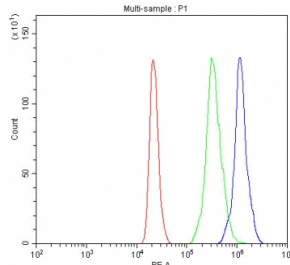
Availability	1-3 business days
Species Reactivity	Human
Format	Antigen affinity purified
Host	Rabbit
Clonality	Polyclonal (rabbit origin)
Isotype	Rabbit IgG
Purity	Antigen affinity purified
Buffer	Lyophilized from 1X PBS with 2% Trehalose
UniProt	Q5TBB1
Localization	Nuclear
Applications	Western Blot : 0.5-1ug/ml Immunofluorescence : 5ug/ml Flow Cytometry : 1-3ug/million cells Direct ELISA : 0.1-0.5ug/ml
Limitations	This RNase H2 subunit B antibody is available for research use only.



Immunofluorescent staining of FFPE human T-47D cells with RNase H2 subunit B antibody (red) and Alpha Tubulin mAb (green). HIER: steam section in pH6 citrate buffer for 20 min.



Western blot testing of human MOLT4 cell lysate with RNase H2 subunit B antibody.
Predicted molecular weight ~35 kDa.



Flow cytometry testing of human HL60 cells with RNase H2 subunit B antibody at 1ug/million cells (blocked with goat sera); Red=cells alone, Green=isotype control, Blue=RNase H2 subunit B antibody.

Description

Ribonuclease H2, subunit B is a protein that in humans is encoded by the RNASEH2B gene. RNase H2 is composed of a single catalytic subunit (A) and two non-catalytic subunits (B and C) and specifically degrades the RNA of RNA:DNA hybrids. The protein encoded by this gene is the non-catalytic B subunit of RNase H2, which is thought to play a role in DNA replication. Multiple transcript variants encoding different isoforms have been found for this gene. Defects in this gene are a cause of Aicardi-Goutieres syndrome type 2 (AGS2).

Application Notes

Optimal dilution of the RNase H2 subunit B antibody should be determined by the researcher.

Immunogen

E. coli-derived recombinant human protein (amino acids K39-E260) was used as the immunogen for the RNase H2 subunit B antibody.

Storage

After reconstitution, the RNase H2 subunit B antibody can be stored for up to one month at 4°C. For long-term, aliquot and store at -20°C. Avoid repeated freezing and thawing.