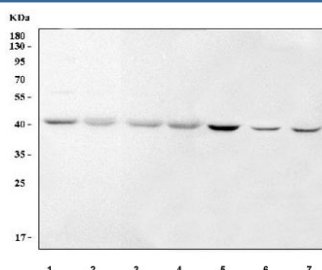


RNA 3'-terminal phosphate cyclase Antibody / RTCA (RQ8463)

Catalog No.	Formulation	Size
RQ8463	0.5mg/ml if reconstituted with 0.2ml sterile DI water	100 ug

Bulk quote request

Availability	1-3 days
Species Reactivity	Human, Mouse, Rat
Format	Antigen affinity purified
Clonality	Polyclonal (rabbit origin)
Isotype	Rabbit IgG
Purity	Antigen affinity purified
Buffer	Lyophilized from 1X PBS with 2% Trehalose
UniProt	O00442
Applications	Western Blot : 0.5-1ug/ml ELISA : 0.1-0.5ug/ml
Limitations	This RNA 3'-terminal phosphate cyclase antibody is available for research use only.



Western blot testing of 1) human ThP-1, 2) human K562, 3) human PC-3, 4) human HepG2, 5) rat testis and 6) rat C6 and 7) mouse NIH 3T3 cell lysate with RNA 3'-terminal phosphate cyclase antibody. Predicted molecular weight ~39 kDa.

Description

This gene encodes a member of the RNA 3'-phosphate cyclase family. The encoded protein plays a role in RNA metabolism by catalyzing the ATP-dependent conversion of the 3'-phosphate of RNA substrates to a 2',3'-cyclic phosphodiester. Alternatively spliced transcript variants encoding multiple isoforms have been observed for this gene.

Application Notes

Optimal dilution of the RNA 3'-terminal phosphate cyclase antibody should be determined by the researcher.

Immunogen

An E.coli-derived human recombinant protein (amino acids M1-D297) was used as the immunogen for the RNA 3'-terminal phosphate cyclase antibody.

Storage

After reconstitution, the RNA 3'-terminal phosphate cyclase antibody can be stored for up to one month at 4oC. For long-term, aliquot and store at -20oC. Avoid repeated freezing and thawing.