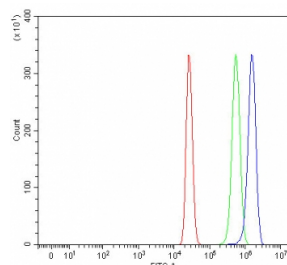


RLBP1 Antibody / Retinaldehyde-binding protein 1 / CRALBP (RQ7853)

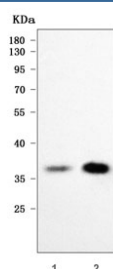
Catalog No.	Formulation	Size
RQ7853	0.5mg/ml if reconstituted with 0.2ml sterile DI water	100 ug

Bulk quote request

Availability	1-3 business days
Species Reactivity	Human, Mouse, Rat
Format	Antigen affinity purified
Host	Rabbit
Clonality	Polyclonal (rabbit origin)
Isotype	Rabbit IgG
Purity	Antigen affinity purified
Buffer	Lyophilized from 1X PBS with 2% Trehalose
UniProt	P12271
Applications	Western Blot : 0.5-1ug/ml Flow Cytometry : 1-3ug/million cells Direct ELISA : 0.1-0.5ug/ml
Limitations	This RLBP1 antibody is available for research use only.



Flow cytometry testing of human HepG2 cells with RLBP1 antibody at 1ug/million cells (blocked with goat sera); Red=cells alone, Green=isotype control, Blue= RLBP1 antibody.



Western blot testing of 1) rat eye and 2) mouse eye tissue lysate with RLBP1 antibody. Predicted molecular weight ~36 kDa.

Description

Retinaldehyde-binding protein 1 (RLBP1) also known as cellular retinaldehyde-binding protein (CRALBP) is a 36-kD water-soluble protein that in humans is encoded by the RLBP1 gene. The protein encoded by this gene is a 36-kD water-soluble protein which carries 11-cis-retinaldehyde or 11-cis-retinal as physiologic ligands. It may be a functional component of the visual cycle. Mutations of this gene have been associated with severe rod-cone dystrophy, Bothnia dystrophy (nonsyndromic autosomal recessive retinitis pigmentosa) and retinitis punctata albescens.

Application Notes

Optimal dilution of the RLBP1 antibody should be determined by the researcher.

Immunogen

E. coli-derived recombinant human protein (amino acids E3-D288) was used as the immunogen for the RLBP1 antibody.

Storage

After reconstitution, the RLBP1 antibody can be stored for up to one month at 4°C. For long-term, aliquot and store at -20°C. Avoid repeated freezing and thawing.