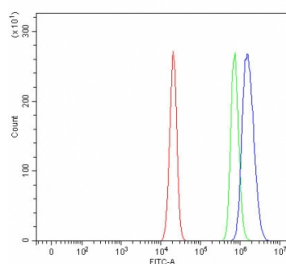


RIT2 Antibody / Ras-like protein expressed in neurons (RQ7854)

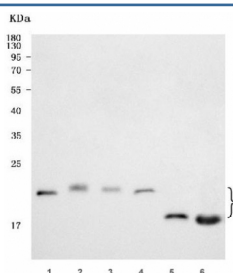
Catalog No.	Formulation	Size
RQ7854	0.5mg/ml if reconstituted with 0.2ml sterile DI water	100 ug

Bulk quote request

Availability	1-3 business days
Species Reactivity	Human, Mouse, Rat
Format	Antigen affinity purified
Clonality	Polyclonal (rabbit origin)
Isotype	Rabbit IgG
Purity	Antigen affinity purified
Buffer	Lyophilized from 1X PBS with 2% Trehalose
UniProt	Q99578
Applications	Western Blot : 0.5-1ug/ml Flow Cytometry : 1-3ug/million cells Direct ELISA : 0.1-0.5ug/ml
Limitations	This RIT2 antibody is available for research use only.



Flow cytometry testing of human U-2 OS cells with RIT2 antibody at 1ug/million cells (blocked with goat sera); Red=cells alone, Green=isotype control, Blue= RIT2 antibody.



Western blot testing of 1) human SH-SY5Y, 2) human SK-N-SH, 3) U-87 MG, 4) U-251, 5) rat brain and 6) mouse brain tissue lysate with RIT2 antibody. Predicted molecular weight: 17-25 kDa (multiple isoforms).

Description

GTP-binding protein Rit2 is a protein that in humans is encoded by the RIT2 gene. RIN belongs to the RAS (HRAS; MIM 190020) superfamily of small GTPases

Application Notes

Optimal dilution of the RIT2 antibody should be determined by the researcher.

Immunogen

E. coli-derived recombinant human protein (amino acids Q119-K193) was used as the immunogen for the RIT2 antibody.

Storage

After reconstitution, the RIT2 antibody can be stored for up to one month at 4°C. For long-term, aliquot and store at -20°C. Avoid repeated freezing and thawing.