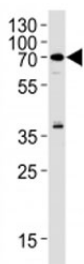


## RIPK2 Antibody (F43229)

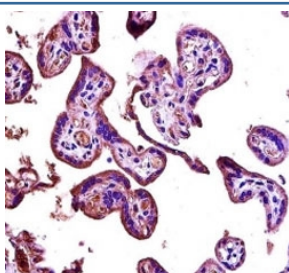
Catalog No.	Formulation	Size
F43229-0.4ML	In 1X PBS, pH 7.4, with 0.09% sodium azide	0.4 ml
F43229-0.08ML	In 1X PBS, pH 7.4, with 0.09% sodium azide	0.08 ml

**Bulk quote request**

<b>Availability</b>	1-3 business days
<b>Species Reactivity</b>	Human
<b>Format</b>	Antigen affinity purified
<b>Clonality</b>	Polyclonal (rabbit origin)
<b>Isotype</b>	Rabbit Ig
<b>Purity</b>	Antigen affinity
<b>UniProt</b>	O43353
<b>Applications</b>	Western Blot : 1:1000 IHC (Paraffin) : 1:10-1:50
<b>Limitations</b>	This RIPK2 antibody is available for research use only.



RIPK2 antibody western blot analysis in Raji lysate



RIPK2 antibody immunohistochemistry analysis in formalin fixed and paraffin embedded human placenta tissue.

## Description

This gene encodes a member of the receptor-interacting protein (RIP) family of serine/threonine protein kinases. The encoded protein contains a C-terminal caspase activation and recruitment domain (CARD), and is a component of signaling complexes in both the innate and adaptive immune pathways. It is a potent activator of NF-kappaB and inducer of apoptosis in response to various stimuli.

## Application Notes

Titration of the RIPK2 antibody may be required due to differences in protocols and secondary/substrate sensitivity.

## Immunogen

A portion of amino acids 39-68 from the human protein was used as the immunogen for this RIPK2 antibody.

## Storage

Aliquot the RIPK2 antibody and store frozen at -20oC or colder. Avoid repeated freeze-thaw cycles.