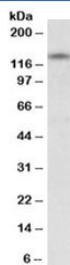


RIP140 Antibody (R33821)

Catalog No.	Formulation	Size
R33821-100UG	0.5 mg/ml in 1X TBS, pH7.3, with 0.5% BSA (US sourced) and 0.02% sodium azide	100 ug

[Bulk quote request](#)

Availability	1-3 business days
Species Reactivity	Human
Predicted Reactivity	Cow, Dog, Mouse, Rat
Format	Antigen affinity purified
Host	Goat
Clonality	Polyclonal (goat origin)
Isotype	Goat Ig
Purity	Antigen affinity
Gene ID	8204
Applications	Western Blot : 0.5-2ug/ml ELISA (peptide) LOD : 1:32000
Limitations	This RIP140 antibody is available for research use only.



Western blot testing of human cerebellum lysate with RIP140 antibody at 0.5ug/ml.
Predicted molecular weight: ~127kDa, routinely observed at ~140kDa.

Description

Additional name(s) for this target protein: Receptor interacting protein 140; NRIP1; nuclear receptor interacting protein 1

Application Notes

Optimal dilution of the RIP140 antibody should be determined by the researcher.

Immunogen

Amino acids EKDSPRLTKTNP were used as the immunogen for this RIP140 antibody.

Storage

Aliquot and store the RIP140 antibody at -20oC.