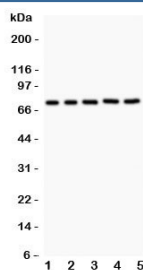


RIP1 Antibody / RIPK1 (R31540)

Catalog No.	Formulation	Size
R31540	0.5mg/ml if reconstituted with 0.2ml sterile DI water	100 ug

Bulk quote request

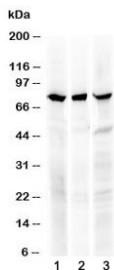
Availability	1-3 business days
Species Reactivity	Human
Format	Antigen affinity purified
Host	Rabbit
Clonality	Polyclonal (rabbit origin)
Isotype	Rabbit IgG
Purity	Antigen affinity
Buffer	Lyophilized from 1X PBS with 2.5% BSA and 0.025% sodium azide
UniProt	Q13546
Applications	Western Blot : 0.5-1ug/ml
Limitations	This RIP1 antibody is available for research use only.



Western blot testing of RIP1 antibody and Lane 1: Jurkat; 2: 22RV1; 3: MCF-7; 4: HeLa; 5: A549. Expected/observed size ~76 kDa.



Western blot testing of RIP1 antibody and recombinant human protein (0.5ng)



Western blot testing of human 1) PANC1, 2) SKOV-3 and 3) HeLa cell lysate (50ug/lane) with RIP1 antibody at 0.5ug/ml. Predicted molecular weight ~76 kDa.

Description

RIPK1, also known as RIP or RIP1, is an enzyme that in humans is encoded by the RIPK1 gene. It is mapped to 6p25.2. RIPK1 is a key signaling molecule in the programmed necrosis pathway, which plays important roles in development, tissue damage response, and antiviral immunity. RIPK1 is known to have function in a variety of cellular pathways including the NF- κ B pathway and programmed necrotic cell death (necroptosis). The kinase domain, while important for necroptotic (programmed necrotic) functions, it appears dispensable for other lethal, as well as pro-survival roles. Also, proteolytic processing of RIPK1, through both caspase-dependent and -independent mechanisms, triggers lethality that is dependent on the generation of one or more specific C-terminal cleavage product(s) of RIPK1 upon stress.

Application Notes

The stated application concentrations are suggested starting amounts. Titration of the RIP1 antibody may be required due to differences in protocols and secondary/substrate sensitivity.

Immunogen

Human partial recombinant protein (AA 316-671) was used as the immunogen for this RIP1 antibody.

Storage

After reconstitution, the RIP1 antibody can be stored for up to one month at 4°C. For long-term, aliquot and store at -20°C. Avoid repeated freezing and thawing.