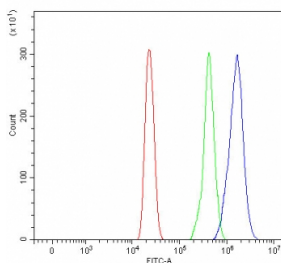


RIO2 Antibody / RIOK2 (RQ8002)

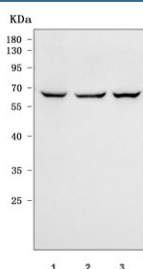
Catalog No.	Formulation	Size
RQ8002	0.5mg/ml if reconstituted with 0.2ml sterile DI water	100 ug

[Bulk quote request](#)

Availability	1-3 business days
Species Reactivity	Human
Format	Antigen affinity purified
Host	Rabbit
Clonality	Polyclonal (rabbit origin)
Isotype	Rabbit IgG
Purity	Antigen affinity purified
Buffer	Lyophilized from 1X PBS with 2% Trehalose
UniProt	Q9BVS4
Applications	Western Blot : 0.5-1ug/ml Flow Cytometry : 1-3ug/million cells Direct ELISA : 0.1-0.5ug/ml
Limitations	This RIO2 antibody is available for research use only.



Flow cytometry testing of fixed and permeabilized human HL60 cells with RIO2 antibody at 1ug/million cells (blocked with goat sera); Red=cells alone, Green=isotype control, Blue= RIO2 antibody.



Western blot testing of human 1) U-251, 2) HeLa and 3) HepG2 cell lysate with RIO2 antibody. Predicted molecular weight ~63 kDa, 55 kDa (two isoforms).

Description

RIO kinase 2 (RIOK2) is a member of the RIO family of atypical serine protein kinases first characterized in yeast. There are three RIO kinase subfamilies: RIO1, RIO2, and RIO3. RIOK1 and RIOK2 proteins are present in organisms from Archaea to humans. Studies of RIO kinases in yeast indicate that they play a role in ribosome biogenesis. Human RIOK2 has been shown to be a part of a late 40S pre-ribosomal particle and have influence on 40S maturation.

Application Notes

Optimal dilution of the RIO2 antibody should be determined by the researcher.

Immunogen

E. coli-derived recombinant human protein (amino acids D16-L283) was used as the immunogen for the RIO2 antibody.

Storage

After reconstitution, the RIO2 antibody can be stored for up to one month at 4oC. For long-term, aliquot and store at -20oC. Avoid repeated freezing and thawing.