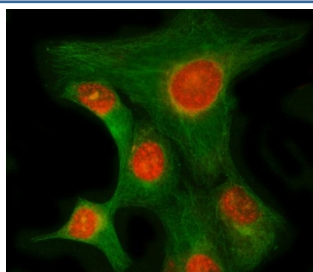


RIMKLB Antibody / Beta-citrylglutamate synthase B (RQ7836)

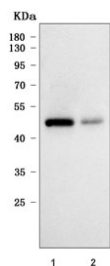
Catalog No.	Formulation	Size
RQ7836	0.5mg/ml if reconstituted with 0.2ml sterile DI water	100 ug

Bulk quote request

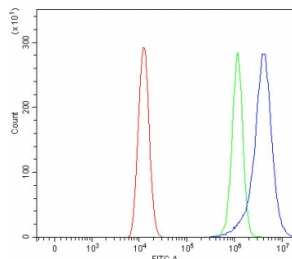
Availability	1-3 business days
Species Reactivity	Human
Format	Antigen affinity purified
Clonality	Polyclonal (rabbit origin)
Isotype	Rabbit IgG
Purity	Antigen affinity purified
Buffer	Lyophilized from 1X PBS with 2% Trehalose
UniProt	Q9ULI2
Localization	Nucleoplasm, Centriolar satellite
Applications	Western Blot : 0.5-1ug/ml Immunofluorescence : 5ug/ml Flow Cytometry : 1-3ug/million cells Direct ELISA : 0.1-0.5ug/ml
Limitations	This RIMKLB antibody is available for research use only.



Immunofluorescent staining of FFPE human HeLa cells with RIMKLB antibody (red) and Beta Tubulin mAb (green). HIER: steam section in pH6 citrate buffer for 20 min.



Western blot testing of human 1) HeLa and 2) U-2 OS cell lysate with RIMKLB antibody.
Predicted molecular weight ~42 kDa.



Flow cytometry testing of human HEL cells with RIMKLB antibody at 1ug/million cells (blocked with goat sera); Red=cells alone, Green=isotype control, Blue= RIMKLB antibody.

Description

Catalyzes the synthesis of beta-citryl-L-glutamate and N-acetyl-L-aspartyl-L-glutamate. Beta-citryl-L-glutamate is synthesized more efficiently than N-acetyl-L-aspartyl-L-glutamate. [UniProt]

Application Notes

Optimal dilution of the RIMKLB antibody should be determined by the researcher.

Immunogen

E. coli-derived recombinant human protein (amino acids E25-D386) was used as the immunogen for the RIMKLB antibody.

Storage

After reconstitution, the RIMKLB antibody can be stored for up to one month at 4oC. For long-term, aliquot and store at -20oC. Avoid repeated freezing and thawing.