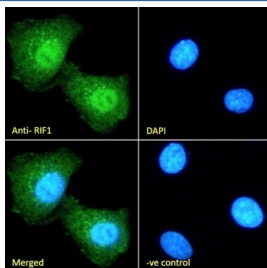


RIF1 Antibody (R35695)

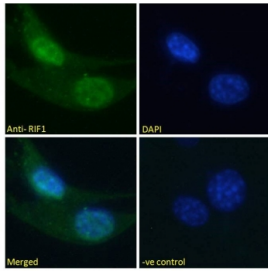
| Catalog No. | Formulation | Size |
|--------------|-------------------------------------------------------------------------------|--------|
| R35695-100UG | 0.5 mg/ml in 1X TBS, pH7.3, with 0.5% BSA (US sourced) and 0.02% sodium azide | 100 ug |

[Bulk quote request](#)

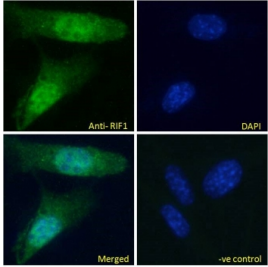
| | |
|-----------------------------|-------------------------------------------------------------------------|
| Availability | 1-3 business days |
| Species Reactivity | Human, Mouse |
| Predicted Reactivity | Dog, Pig, Cow |
| Format | Antigen affinity purified |
| Host | Goat |
| Clonality | Polyclonal (goat origin) |
| Isotype | Goat Ig |
| Purity | Antigen affinity |
| Gene ID | 55183 |
| Applications | Immunofluorescence : 10ug/ml Ug/ml : ELISA (peptide) LOD : 1:8000 |
| Limitations | This RIF1 antibody is available for research use only. |



IF/ICC staining of fixed and permeabilized human HEK293 cells with RIF1 antibody (green) at 10ug/ml and DAPI nuclear stain (blue).



IF/ICC staining of fixed and permeabilized human U-2 OS cells with RIF1 antibody (green) at 10ug/ml and DAPI nuclear stain (blue).



IF/ICC staining of fixed and permeabilized mouse NIH 3T3 cells with RIF1 antibody (green) at 10ug/ml and DAPI nuclear stain (blue).

Description

Additional name(s) for this target protein: RAP1 interacting factor

Application Notes

Optimal dilution of the RIF1 antibody should be determined by the researcher.

Immunogen

Amino acids RNLQSRWRSPSHEN were used as the immunogen for this RIF1 antibody.

Storage

Aliquot and store the RIF1 antibody at -20oC.