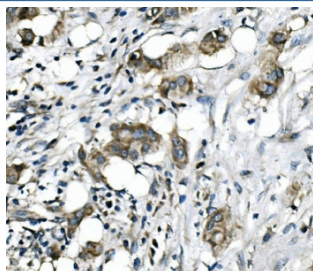


RICTOR Antibody (RQ5637)

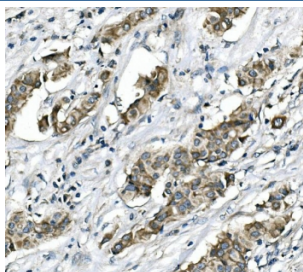
Catalog No.	Formulation	Size
RQ5637	0.5mg/ml if reconstituted with 0.2ml sterile DI water	100 ug

Bulk quote request

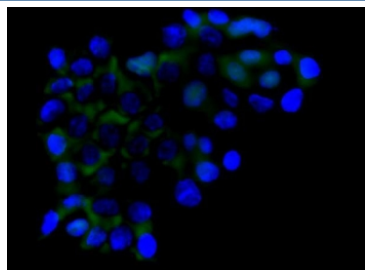
Availability	1-3 business days
Species Reactivity	Human
Format	Antigen affinity purified
Host	Rabbit
Clonality	Polyclonal
Isotype	Rabbit IgG
Purity	Affinity purified
Buffer	Lyophilized from 1X PBS with 2% Trehalose and 0.025% sodium azide
UniProt	Q6R327
Applications	Western Blot : 0.5-1ug/ml Immunohistochemistry : 1-2ug/ml Immunofluorescence : 2-4ug/ml Flow Cytometry : 1-3ug/million cells Direct ELISA : 0.1-0.5ug/ml
Limitations	This RICTOR antibody is available for research use only.



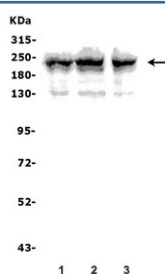
IHC staining of FFPE human breast cancer with RICTOR antibody. HIER: boil tissue sections in pH8 EDTA for 20 min and allow to cool before testing.



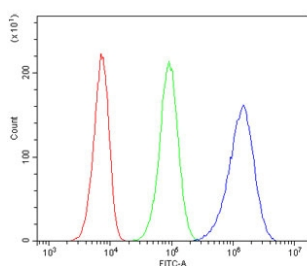
IHC staining of FFPE human breast cancer with RICTOR antibody. HIER: boil tissue sections in pH8 EDTA for 20 min and allow to cool before testing.



Immunofluorescent staining of FFPE human A431 cells with RICTOR antibody (green) and DAPI nuclear stain (blue). HIER: steam section in pH6 citrate buffer for 20 min.



Western blot testing of human 1) U-2 OS, 2) K562 and 3) PC-3 lysate with RICTOR antibody. Predicted molecular weight ~200 kDa.



Flow cytometry testing of human 293T cells with RICTOR antibody at 1ug/million cells (blocked with goat sera); Red=cells alone, Green=isotype control, Blue= RICTOR antibody.

Description

Rapamycin-insensitive companion of mTOR is a protein that in human is encoded by the RICTOR gene. This gene is mapped to 5p13.1. RICTOR and MTOR are components of a protein complex that integrates nutrient- and growth factor-derived signals to regulate cell growth.

Application Notes

Optimal dilution of the RICTOR antibody should be determined by the researcher.

Immunogen

Recombinant human protein (amino acids E23-H264) was used as the immunogen for the RICTOR antibody.

Storage

After reconstitution, the RICTOR antibody can be stored for up to one month at 4oC. For long-term, aliquot and store at -20oC. Avoid repeated freezing and thawing.

