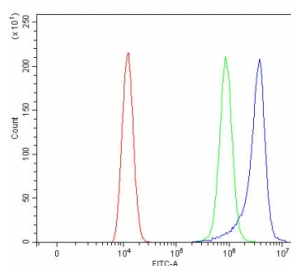


Ribonuclease K6 Antibody / RNASE6 (RQ7782)

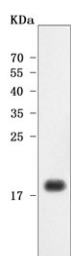
Catalog No.	Formulation	Size
RQ7782	0.5mg/ml if reconstituted with 0.2ml sterile DI water	100 ug

[Bulk quote request](#)

Availability	1-3 business days
Species Reactivity	Human
Format	Antigen affinity purified
Host	Rabbit
Clonality	Polyclonal (rabbit origin)
Isotype	Rabbit IgG
Purity	Antigen affinity purified
Buffer	Lyophilized from 1X PBS with 2% Trehalose
UniProt	Q93091
Applications	Western Blot : 0.5-1ug/ml Flow Cytometry : 1-3ug/million cells Direct ELISA : 0.1-0.5ug/ml
Limitations	This Ribonuclease K6 antibody is available for research use only.



Flow cytometry testing of human HEL cells with Ribonuclease K6 antibody at 1ug/million cells (blocked with goat sera); Red=cells alone, Green=isotype control, Blue= Ribonuclease K6 antibody.



Western blot testing of human ThP-1 cell lysate with Ribonuclease K6 antibody. Predicted molecular weight ~17 kDa.

Description

Ribonuclease A family member k6 is a protein that in humans is encoded by the RNASE6 gene. The protein encoded by this gene is a member of the ribonuclease A superfamily and functions in the urinary tract. The protein has broad-spectrum antimicrobial activity against pathogenic bacteria.

Application Notes

Optimal dilution of the Ribonuclease K6 antibody should be determined by the researcher.

Immunogen

E. coli-derived recombinant human protein (amino acids P25-L150) was used as the immunogen for the Ribonuclease K6 antibody.

Storage

After reconstitution, the Ribonuclease K6 antibody can be stored for up to one month at 4oC. For long-term, aliquot and store at -20oC. Avoid repeated freezing and thawing.