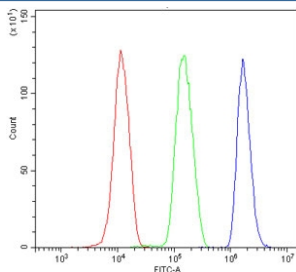


Ribonuclease 3 Antibody / DROSHA / RNase III (RQ5719)

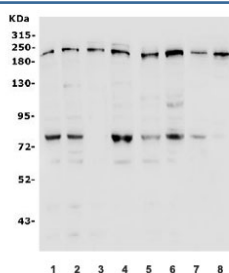
Catalog No.	Formulation	Size
RQ5719	0.5mg/ml if reconstituted with 0.2ml sterile DI water	100 ug

[Bulk quote request](#)

Availability	1-3 business days
Species Reactivity	Human, Mouse
Format	Antigen affinity purified
Host	Rabbit
Clonality	Polyclonal
Isotype	Rabbit IgG
Purity	Affinity purified
Buffer	Lyophilized from 1X PBS with 2% Trehalose and 0.025% sodium azide
UniProt	Q9NRR4
Applications	Western Blot : 0.5-1ug/ml Direct ELISA : 0.1-0.5ug/ml
Limitations	This Ribonuclease 3 antibody is available for research use only.



Flow cytometry testing of human HL-60 cells with Ribonuclease 3 antibody at 1ug/million cells (blocked with goat sera); Red=cells alone, Green=isotype control, Blue= Ribonuclease 3 antibody.



Western blot testing of human 1) HeLa, 2) HEK293, 3) Jurkat, 4) HepG2, 5) SW620, 6) K562, 7) mouse Neuro-2a and 8) mouse ANA-1 lysate with Ribonuclease 3 antibody. Predicted molecular weight ~159 kDa.

Description

Drosha is a Class 2 ribonuclease III enzyme that in humans is encoded by the DROSHA (formerly RNASEN) gene. This gene encodes a ribonuclease (RNase) III double-stranded RNA-specific ribonuclease and subunit of the microprocessor protein complex, which catalyzes the initial processing step of microRNA (miRNA) synthesis. The encoded protein cleaves the stem loop structure from the primary microRNA (pri-miRNA) in the nucleus, yielding the precursor miRNA (pre-miRNA), which is then exported to the cytoplasm for further processing. In a human cell line lacking a functional copy of this gene, canonical miRNA synthesis is reduced. Somatic mutations in this gene have been observed in human patients with kidney cancer.

Application Notes

Optimal dilution of the Ribonuclease 3 antibody should be determined by the researcher.

Immunogen

Recombinant human protein (amino acids E670-H903) was used as the immunogen for the Ribonuclease 3 antibody.

Storage

After reconstitution, the Ribonuclease 3 antibody can be stored for up to one month at 4°C. For long-term, aliquot and store at -20°C. Avoid repeated freezing and thawing.