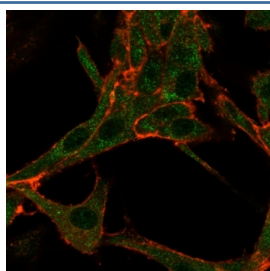


## RHOXF2 Antibody / THG1 [clone PCRP-RHOXF2-1D7] (V9251)

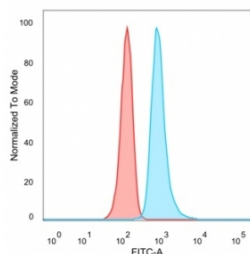
| Catalog No.    | Formulation   | Size   |
|----------------|---|--------|
| V9251-100UG    | 0.2 mg/ml in 1X PBS with 0.1 mg/ml BSA (US sourced), 0.05% sodium azide | 100 ug |
| V9251-20UG     | 0.2 mg/ml in 1X PBS with 0.1 mg/ml BSA (US sourced), 0.05% sodium azide | 20 ug  |
| V9251SAF-100UG | 1 mg/ml in 1X PBS; BSA free, sodium azide free                          | 100 ug |

[Bulk quote request](#)

|                           |   |
|---------------------------|---|
| <b>Availability</b>       | 1-3 business days   |
| <b>Species Reactivity</b> | Human   |
| <b>Format</b>             | Purified  |
| <b>Host</b>               | Mouse   |
| <b>Clonality</b>          | Monoclonal (mouse origin)   |
| <b>Isotype</b>            | Mouse IgG2b   |
| <b>Clone Name</b>         | PCRP-RHOXF2-1D7   |
| <b>Purity</b>             | Protein A/G affinity  |
| <b>UniProt</b>            | Q9BQY4  |
| <b>Localization</b>       | Nucleus   |
| <b>Applications</b>       | Flow Cytometry : 1-2ug/million cells<br>Immunofluorescence : 1-2ug/ml |
| <b>Limitations</b>        | This RHOXF2 antibody is available for research use only.              |



Immunofluorescent staining of human HeLa cells using RHOXF2 antibody (green, clone PCRP-RHOXF2-1D7) and phalloidin (red).

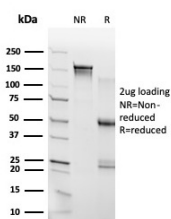


FACS staining of PFA-fixed human HeLa cells with RHOXF2 antibody (blue, clone PCRP-RHOXF2-1D7), and unstained cells (red).

Human Protein Microarray Specificity Validation



Analysis of HuProt(TM) microarray containing more than 19,000 full-length human proteins using RHOXF2 antibody (clone PCRP-RHOXF2-1D7). These results demonstrate the foremost specificity of the PCRP-RHOXF2-1D7 mAb. Z- and S- score: The Z-score represents the strength of a signal that an antibody (in combination with a fluorescently-tagged anti-IgG secondary Ab) produces when binding to a particular protein on the HuProt(TM) array. Z-scores are described in units of standard deviations (SD's) above the mean value of all signals generated on that array. If the targets on the HuProt(TM) are arranged in descending order of the Z-score, the S-score is the difference (also in units of SD's) between the Z-scores. The S-score therefore represents the relative target specificity of an Ab to its intended target.



SDS-PAGE analysis of purified, BSA-free RHOXF2 antibody (clone PCRP-RHOXF2-1D7) as confirmation of integrity and purity.

## Description

RHOXF2 (RhoX homeobox family member 2), also known as THG1 (Testis homeobox gene 1) belongs to the paired-like homeobox family, PEPP subfamily. It is a transcription factor that maybe involved in reproductive processes. It modulates expression of target genes encoding proteins involved in processes relevant to spermatogenesis. [UniProt]

## Application Notes

Optimal dilution of the RHOXF2 antibody should be determined by the researcher.

## Immunogen

Recombinant full-length human RhoX homeobox family member 2 protein was used as the immunogen for the RHOXF2 antibody.

## Storage

Aliquot the RHOXF2 antibody and store frozen at -20oC or colder. Avoid repeated freeze-thaw cycles.

