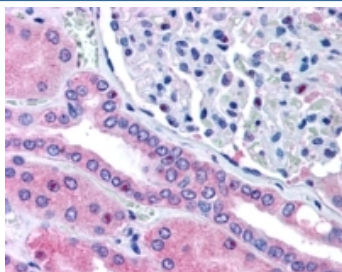


Rhophilin 2 Antibody (R36226)

Catalog No.	Formulation	Size
R36226-100UG	0.5 mg/ml in 1X TBS, pH7.3, with 0.5% BSA (US sourced) and 0.02% sodium azide	100 ug

[Bulk quote request](#)

Availability	1-3 business days
Species Reactivity	Human
Predicted Reactivity	Cow, Mouse, Rat
Format	Antigen affinity purified
Host	Goat
Clonality	Polyclonal (goat origin)
Isotype	Goat Ig
Purity	Antigen affinity
Gene ID	85415
Applications	Immunohistochemistry (FFPE) : 5-10ug/ml ELISA (peptide) LOD : 1:32000
Limitations	This Rhophilin 2 antibody is available for research use only.



IHC testing of FFPE human kidney with Rhophilin 2 antibody at 5ug/ml. HIER: steamed with pH6 citrate buffer, AP-staining.

Description

Additional name(s) for this target protein: RHPN2; rhophilin-like protein

Application Notes

Optimal dilution of the Rhophilin 2 antibody should be determined by the researcher.

Immunogen

Amino acids TNKNRQKSAST were used as the immunogen for this Rhophilin 2 antibody.

Storage

Aliquot and store the Rhophilin 2 antibody at -20oC.