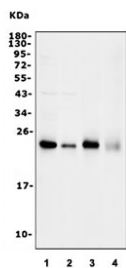


RhoF Antibody (RQ6337)

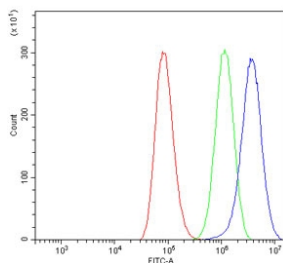
Catalog No.	Formulation	Size
RQ6337	0.5mg/ml if reconstituted with 0.2ml sterile DI water	100 ug

[Bulk quote request](#)

Availability	1-3 business days
Species Reactivity	Human, Mouse, Rat
Format	Purified
Host	Rabbit
Clonality	Polyclonal (rabbit origin)
Isotype	Rabbit IgG
Purity	Antigen affinity purified
Buffer	Lyophilized from 1X PBS with 2% Trehalose
UniProt	Q9HBH0
Applications	Western Blot : 0.5-1ug/ml Flow Cytometry : 1-3ug/million cells Direct ELISA : 0.1-0.5ug/ml
Limitations	This RhoF antibody is available for research use only.



Western blot testing of 1) human HeLa, 2) human A549, 3) rat brain and 4) mouse brain lysate with RhoF antibody. Predicted molecular weight ~23 kDa.



Flow cytometry testing of human A549 cells with RhoF antibody at 1ug/million cells (blocked with goat sera); Red=cells alone, Green=isotype control, Blue= RhoF antibody.

Description

Rho, the Ras-related small GTPase, is responsible for the regulation of actin-based cytoskeletal structures including stress fibers, focal adhesions and the contractile ring apparatus. Rho proteins function as molecular switches that are able to turn cytokinesis on and off. Although little is known about signaling downstream of Rho, a host of putative Rho effector proteins have been described. Rho F (ras homolog gene family, member F), also known as RIF or ARHF, is a 211 amino acid membrane protein that localizes to the cytoplasmic side of the plasma membrane. Belonging to the small GTPase superfamily and the Rho family, Rho F functions cooperatively with Cdc42 and Rac to generate additional cytoskeletal structures, such as increasing variation of actin-based morphology. Rho F exists as two alternatively spliced isoforms and is encoded by a gene located on human chromosome 12q24.31.

Application Notes

Optimal dilution of the RhoF antibody should be determined by the researcher.

Immunogen

Recombinant human protein (amino acids Y39-K204) was used as the immunogen for the RhoF antibody.

Storage

After reconstitution, the RhoF antibody can be stored for up to one month at 4oC. For long-term, aliquot and store at -20oC. Avoid repeated freezing and thawing.