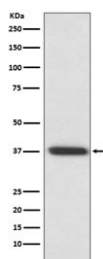


## Rhodopsin Antibody / RHO [clone AADI-18] (RQ5200)

Catalog No.	Formulation	Size
RQ5200	Antibody in PBS with 0.02% sodium azide, 50% glycerol and 0.4-0.5mg/ml BSA	100 ul

[Bulk quote request](#)

Availability	1-2 weeks
Species Reactivity	Human, Rat
Format	Purified
Clonality	Rabbit Monoclonal
Isotype	Rabbit IgG
Clone Name	AADI-18
Purity	Affinity purified
UniProt	P08100
Applications	Western Blot : 1:500-1:2000
Limitations	This Rhodopsin antibody is available for research use only.



Western blot testing of rat eyeball lysate with Rhodopsin antibody. Predicted molecular weight ~40 kDa.

### Description

The protein encoded by the RHO gene is found in rod cells in the back of the eye and is essential for vision in low-light conditions. The encoded protein binds to 11-cis retinal and is activated when light hits the retinal molecule. Defects in this gene are a cause of congenital stationary night blindness. [RefSeq]

### Application Notes

Optimal dilution of the Rhodopsin antibody should be determined by the researcher.

## **Immunogen**

A synthetic peptide specific to human Rhodopsin / RHO was used as the immunogen for the Rhodopsin antibody.

## **Storage**

Store the Rhodopsin antibody at -20oC.