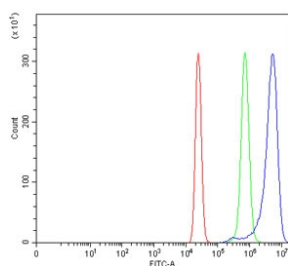


Rho-associated protein kinase 1 Antibody / ROCK1 (RQ7415)

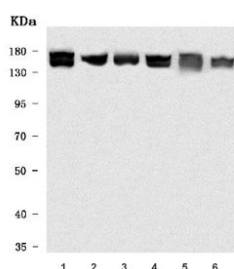
Catalog No.	Formulation	Size
RQ7415	0.5mg/ml if reconstituted with 0.2ml sterile DI water	100 ug

Bulk quote request

Availability	1-3 business days
Species Reactivity	Human, Monkey, Mouse, Rat
Format	Antigen affinity purified
Host	Rabbit
Clonality	Polyclonal (rabbit origin)
Isotype	Rabbit IgG
Purity	Antigen affinity purified
Buffer	Lyophilized from 1X PBS with 2% Trehalose
UniProt	Q13464
Applications	Western Blot : 0.5-1ug/ml Flow Cytometry : 1-3ug/million cells Direct ELISA : 0.1-0.5ug/ml
Limitations	This Rho-associated protein kinase 1 antibody is available for research use only.



Flow cytometry testing of human U-2 OS cells with Rho-associated protein kinase 1 antibody at 1ug/million cells (blocked with goat sera); Red=cells alone, Green=isotype control, Blue= Rho-associated protein kinase 1 antibody.



Western blot testing of 1) human HeLa, 2) monkey COS-7, 3) rat liver, 4) rat C6, 5) mouse liver and 6) mouse NIH 3T3 cell lysate with Rho-associated protein kinase 1 antibody. Predicted molecular weight ~158 kDa.

Description

This gene encodes a protein serine/threonine kinase that is activated when bound to the GTP-bound form of Rho. The small GTPase Rho regulates formation of focal adhesions and stress fibers of fibroblasts, as well as adhesion and aggregation of platelets and lymphocytes by shuttling between the inactive GDP-bound form and the active GTP-bound form. Rho is also essential in cytokinesis and plays a role in transcriptional activation by serum response factor. This protein, a downstream effector of Rho, phosphorylates and activates LIM kinase, which in turn, phosphorylates cofilin, inhibiting its actin-depolymerizing activity. A pseudogene, related to this gene, is also located on chromosome 18.

Application Notes

Optimal dilution of the Rho-associated protein kinase 1 antibody should be determined by the researcher.

Immunogen

E. coli-derived recombinant human protein (amino acids K601-R833) was used as the immunogen for the Rho-associated protein kinase 1 antibody.

Storage

After reconstitution, the Rho-associated protein kinase 1 antibody can be stored for up to one month at 4°C. For long-term, aliquot and store at -20°C. Avoid repeated freezing and thawing.