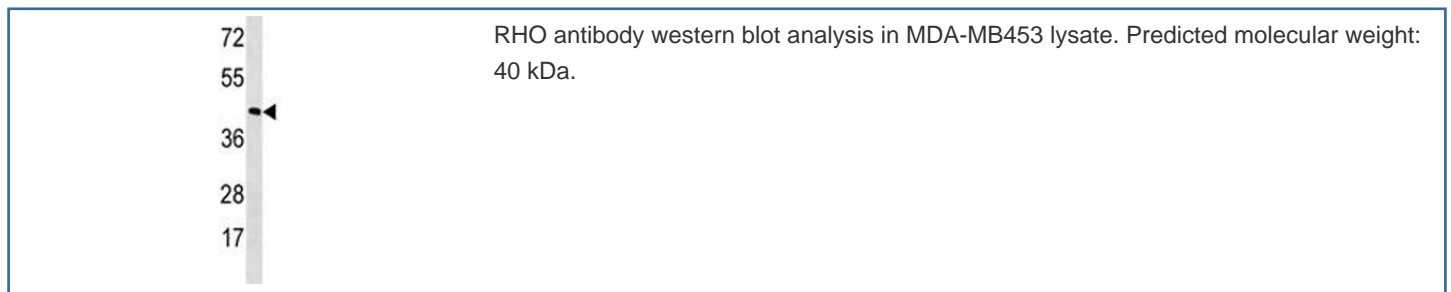


RHO Antibody / Rhodopsin (F45215)

Catalog No.	Formulation	Size
F45215-0.4ML	In 1X PBS, pH 7.4, with 0.09% sodium azide	0.4 ml
F45215-0.08ML	In 1X PBS, pH 7.4, with 0.09% sodium azide	0.08 ml

Bulk quote request

Availability	1-3 business days
Species Reactivity	Human
Predicted Reactivity	Primate
Format	Antigen affinity purified
Host	Rabbit
Clonality	Polyclonal (rabbit origin)
Isotype	Rabbit Ig
Purity	Antigen affinity
UniProt	P08100
Applications	Western Blot : 1:1000
Limitations	This RHO antibody is available for research use only.



Description

Retinitis pigmentosa is an inherited progressive disease which is a major cause of blindness in western communities. It can be inherited as an autosomal dominant, autosomal recessive, or X-linked recessive disorder. In the autosomal dominant form, which comprises about 25% of total cases, approximately 30% of families have mutations in the gene encoding the rod photoreceptor-specific protein rhodopsin. This is the transmembrane protein which, when photoexcited, initiates the visual transduction cascade. Defects in this gene are also one of the causes of congenital stationary night

blindness.

Application Notes

Titration of the RHO antibody may be required due to differences in protocols and secondary/substrate sensitivity.

Immunogen

A portion of amino acids 310-339 from human Rhodopsin was used as the immunogen for this RHO antibody.

Storage

Aliquot the RHO antibody and store frozen at -20oC or colder. Avoid repeated freeze-thaw cycles.