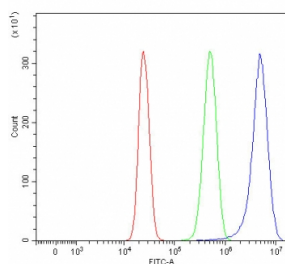


## RHBDF2 Antibody / iRhom2 (RQ7832)

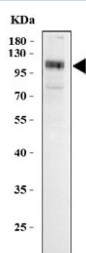
Catalog No.	Formulation	Size
RQ7832	0.5mg/ml if reconstituted with 0.2ml sterile DI water	100 ug

**Bulk quote request**

<b>Availability</b>	1-3 business days
<b>Species Reactivity</b>	Human
<b>Format</b>	Antigen affinity purified
<b>Clonality</b>	Polyclonal (rabbit origin)
<b>Isotype</b>	Rabbit IgG
<b>Purity</b>	Antigen affinity purified
<b>Buffer</b>	Lyophilized from 1X PBS with 2% Trehalose
<b>UniProt</b>	Q6PJF5
<b>Applications</b>	Western Blot : 0.5-1ug/ml Flow Cytometry : 1-3ug/million cells Direct ELISA : 0.1-0.5ug/ml
<b>Limitations</b>	This RHBDF2 antibody is available for research use only.



Flow cytometry testing of human HepG2 cells with RHBDF2 antibody at 1ug/million cells (blocked with goat sera); Red=cells alone, Green=isotype control, Blue= RHBDF2 antibody.



Western blot testing of human MCF7 cell lysate with RHBDF2 antibody. Predicted molecular weight ~97 kDa.

## Description

Rhomboid family member 2 is a protein that in humans is encoded by the RHBDF2 gene. Predicted to enable protein transporter activity. Predicted to be involved in negative regulation of protein secretion and regulation of epidermal growth factor receptor signaling pathway. Located in plasma membrane. Implicated in palmoplantar keratoderma-esophageal carcinoma syndrome.

## Application Notes

Optimal dilution of the RHBDF2 antibody should be determined by the researcher.

## Immunogen

E. coli-derived recombinant human protein (amino acids H145-D529) was used as the immunogen for the RHBDF2 antibody.

## Storage

After reconstitution, the RHBDF2 antibody can be stored for up to one month at 4°C. For long-term, aliquot and store at -20°C. Avoid repeated freezing and thawing.