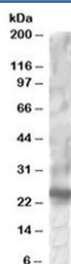


## RGS1 Antibody (R34859)

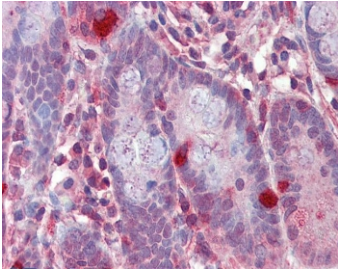
Catalog No.	Formulation	Size
R34859-100UG	0.5 mg/ml in 1X TBS, pH7.3, with 0.5% BSA (US sourced) and 0.02% sodium azide	100 ug

[Bulk quote request](#)

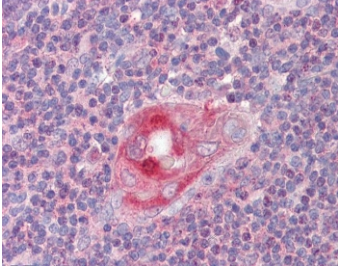
Availability	1-3 business days
Species Reactivity	Human
Predicted Reactivity	Mouse, Rat, Dog, Cow
Format	Antigen affinity purified
Host	Goat
Clonality	Polyclonal (goat origin)
Isotype	Goat Ig
Purity	Antigen affinity
Gene ID	5996
Localization	Cytoplasmic, cell membrane
Applications	Western Blot : 1-3ug/ml IHC (FFPE) : 2.5ug/ml ELISA (peptide) LOD : 1:32000
Limitations	This RGS1 antibody is available for research use only.



Western blot testing of HepG2 lysate with RGS1 antibody at 1ug/ml. Predicted molecular weight: ~24 kDa.



IHC testing of FFPE human small intestine tissue with RGS1 antibody at 2.5ug/ml. Required HIER: steamed antigen retrieval with pH6 citrate buffer; AP-staining.



IHC testing of FFPE human thymus tissue with RGS1 antibody at 2.5ug/ml. Required HIER: steamed antigen retrieval with pH6 citrate buffer; AP-staining.

## Description

Additional name(s) for this target protein: Regulator of G-protein signalling 1, 1R20

## Application Notes

Optimal dilution of the RGS1 antibody should be determined by the researcher.

## Immunogen

Amino acids NLLNDLQANSLK were used as the immunogen for this RGS1 antibody.

## Storage

Aliquot and store the RGS1 antibody at -20oC.