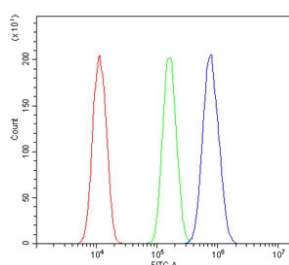


RGMB Antibody / Repulsive Guidance Molecule B (RQ5758)

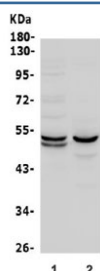
Catalog No.	Formulation	Size
RQ5758	0.5mg/ml if reconstituted with 0.2ml sterile DI water	100 ug

Bulk quote request

Availability	1-3 business days
Species Reactivity	Human, Mouse
Format	Antigen affinity purified
Clonality	Polyclonal (rabbit origin)
Isotype	Rabbit IgG
Purity	Affinity purified
Buffer	Lyophilized from 1X PBS with 2% Trehalose and 0.025% sodium azide
UniProt	Q6NW40
Applications	Western Blot : 0.5-1ug/ml Flow Cytometry : 1-3ug/million cells Direct ELISA : 0.1-0.5ug/ml
Limitations	This RGMB antibody is available for research use only.



Flow cytometry testing of human A431 cells with RGMB antibody at 1ug/million cells (blocked with goat sera); Red=cells alone, Green=isotype control, Blue= RGMB antibody.



Western blot testing of 1) human PC-3 and 2) mouse brain lysate with RGMB antibody. Predicted molecular weight: 48-58 kDa.

Description

Repulsive guidance molecule B (RGMB), also known as DRAGON (DRG11-responsive axonal guidance and outgrowth of neurite), is a bone morphogenetic protein (BMP) co-receptor of the repulsive guidance molecule family. In humans this protein is encoded by the RGMB gene. RGMB is a glycosylphosphatidylinositol (GPI)-anchored member of the repulsive guidance molecule family (see also RGMA and RGMC) and contributes to the patterning of the developing nervous system. There is a potential association between RGMB and cancer bone metastasis, as RGMB coordinate bone morphogenetic protein (BMP) signaling. RGMB may act as a negative regulator in vitro in breast cancer and prostate cancer through BMP signalling. Furthermore, aberrant expression of RGMB was indicated in breast cancer. The perturbed expression was associated with disease progression and poor prognosis.

Application Notes

Optimal dilution of the RGMB antibody should be determined by the researcher.

Immunogen

Recombinant human protein (amino acids D47-R404) was used as the immunogen for the RGMB antibody.

Storage

After reconstitution, the RGMB antibody can be stored for up to one month at 4°C. For long-term, aliquot and store at -20°C. Avoid repeated freezing and thawing.