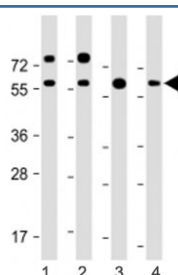


## RGMB Antibody (F54118)

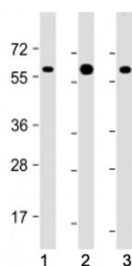
Catalog No.	Formulation	Size
F54118-0.2ML	In 1X PBS, pH 7.4, with 0.09% sodium azide	0.2 ml
F54118-0.05ML	In 1X PBS, pH 7.4, with 0.09% sodium azide	0.05 ml

[Bulk quote request](#)

<b>Availability</b>	1-3 business days
<b>Species Reactivity</b>	Human, Mouse
<b>Format</b>	Antigen affinity purified
<b>Clonality</b>	Polyclonal (rabbit origin)
<b>Isotype</b>	Rabbit Ig
<b>Purity</b>	Antigen affinity
<b>UniProt</b>	Q6NW40
<b>Applications</b>	Western Blot : 1:2000
<b>Limitations</b>	This RGMB antibody is available for research use only.



Western blot testing of RGMB antibody at 1:2000: Lane 1) human U-251 MG, 2) (h) HEK293, 3) (h) brain and 4) mouse brain lysate. Predicted molecular weight: 48-58 kDa.



Western blot testing of RGMB antibody at 1:2000: Lane 1) human HEK293, 2) (h) brain, and 3) mouse brain lysate. Predicted molecular weight: 48-58 kDa.

## Description

Repulsive Guidance Molecule B is a member of the repulsive guidance molecule (RGM) family that contributes to the patterning of the developing nervous system (By similarity). Acts as a bone morphogenetic protein (BMP) coreceptor that potentiates BMP signaling (By similarity). Promotes neuronal adhesion (By similarity). May inhibit neurite outgrowth. [UniProt]

## Application Notes

The stated application concentrations are suggested starting points. Titration of the RGMB antibody may be required due to differences in protocols and secondary/substrate sensitivity.

## Immunogen

Recombinant human RGMB was used as the immunogen for the RGMB antibody.

## Storage

Aliquot the RGMB antibody and store frozen at -20oC or colder. Avoid repeated freeze-thaw cycles.