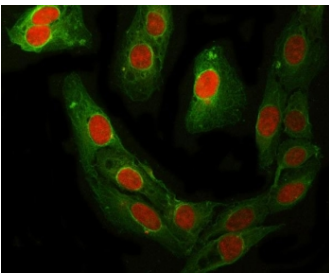


## RFC4 Antibody / RCF37 / Replication factor C subunit 4 (RQ8160)

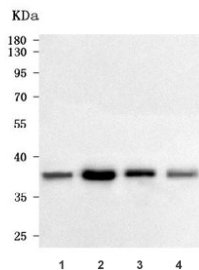
Catalog No.	Formulation	Size
RQ8160	0.5mg/ml if reconstituted with 0.2ml sterile DI water	100 ug

### Bulk quote request

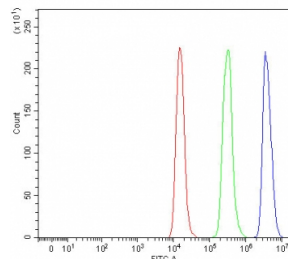
<b>Availability</b>	1-3 business days
<b>Species Reactivity</b>	Human
<b>Format</b>	Antigen affinity purified
<b>Host</b>	Rabbit
<b>Clonality</b>	Polyclonal (rabbit origin)
<b>Isotype</b>	Rabbit IgG
<b>Purity</b>	Antigen affinity purified
<b>Buffer</b>	Lyophilized from 1X PBS with 2% Trehalose
<b>UniProt</b>	P35249
<b>Localization</b>	Nuclear
<b>Applications</b>	Western Blot : 0.5-1ug/ml Immunofluorescence : 5ug/ml Flow Cytometry : 1-3ug/million cells Direct ELISA : 0.1-0.5ug/ml
<b>Limitations</b>	This RFC4 antibody is available for research use only.



Immunofluorescent staining of FFPE human U-2 OS cells with RFC4 antibody (red) and Beta Tubulin mAb (green). HIER: steam section in pH6 citrate buffer for 20 min.



Western blot testing of human 1) MCF7, 2) Raji, 3) HeLa and 4) HepG2 cell lysate with RFC4 antibody. Expected molecular weight: 37-40 kDa.



Flow cytometry testing of fixed and permeabilized human Raji cells with RFC4 antibody at 1ug/million cells (blocked with goat sera); Red=cells alone, Green=isotype control, Blue= RFC4 antibody.

## Description

Replication factor C subunit 4 is a protein that in humans is encoded by the RFC4 gene. The elongation of primed DNA templates by DNA polymerase delta and DNA polymerase epsilon requires the accessory proteins proliferating cell nuclear antigen (PCNA) and replication factor C (RFC). RFC, also named activator 1, is a protein complex consisting of five distinct subunits of 140, 40, 38, 37, and 36 kD. This gene encodes the 37 kD subunit. This subunit forms a core complex with the 36 and 40 kDa subunits. The core complex possesses DNA-dependent ATPase activity, which was found to be stimulated by PCNA in an in vitro system. Alternatively spliced transcript variants encoding the same protein have been reported.

## Application Notes

Optimal dilution of the RFC4 antibody should be determined by the researcher.

## Immunogen

E. coli-derived recombinant human protein (amino acids E42-Q323) was used as the immunogen for the RFC4 antibody.

## Storage

After reconstitution, the RFC4 antibody can be stored for up to one month at 4oC. For long-term, aliquot and store at -20oC. Avoid repeated freezing and thawing.