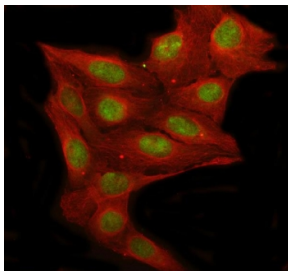


RFC1 Antibody / Replication factor C subunit 1 (R30806)

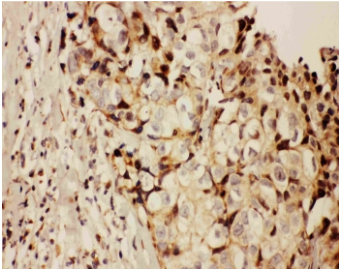
Catalog No.	Formulation	Size
R30806	0.5mg/ml if reconstituted with 0.2ml sterile DI water	100 ug

[Bulk quote request](#)

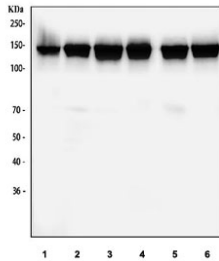
Availability	1-3 business days
Species Reactivity	Human
Format	Antigen affinity purified
Host	Rabbit
Clonality	Polyclonal (rabbit origin)
Isotype	Rabbit IgG
Purity	Antigen affinity
Buffer	Lyophilized from 1X PBS with 2.5% BSA and 0.025% sodium azide/thimerosal
UniProt	P35251
Localization	Nuclear
Applications	Western Blot : 0.5-1ug/ml Immunohistochemistry (FFPE) : 0.5-1ug/ml Immunofluorescence : 5ug/ml Flow Cytometry : 1-3ug/million cells
Limitations	This RFC1 antibody is available for research use only.



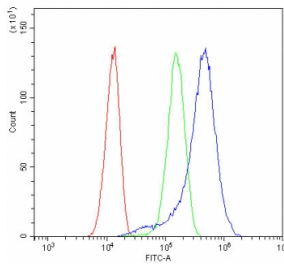
Immunofluorescent staining of FFPE human U-2 OS cells with RFC1 antibody (green) and Beta Tubulin mAb (red). HIER: steam section in pH6 citrate buffer for 20 min.



IHC testing of FFPE human breast cancer tissue with RFC1 antibody at 1ug/ml. Required HIER: steam section in pH6 citrate buffer for 20 min and allow to cool prior to staining.



Western blot testing of human 1) 293T, 2) HeLa, 3) HepG2, 4) Raji, 5) K562 and 6) Caco-2 cell lysate with RFC1 antibody. Predicted molecular weight ~128 kDa.



Flow cytometry testing of fixed and permeabilized human HeLa cells with RFC1 antibody at 1ug/million cells (blocked with goat sera); Red=cells alone, Green=isotype control, Blue= RFC1 antibody.

Description

Replication Factor C, also called Activator-1, is a multimeric primer-recognition protein consisting of five distinct subunits of 145, 40, 38, 37, and 36.5 kD. The human protein was purified from extracts of HeLa cells as a host factor essential for the in vitro replication of simian virus 40 (SV40) DNA. RFC, in the presence of ATP, assembles proliferating-cell nuclear antigen and DNA polymerase-delta or polymerase-epsilon on primed DNA templates. Tight interfacial coordination of the ATP analog ATP-gamma-S by RFC resulted in a spiral arrangement of the ATPase domains of the clamp loader above the PCNA ring.

Application Notes

The stated application concentrations are suggested starting amounts. Titration of the RFC1 antibody may be required due to differences in protocols and secondary/substrate sensitivity.

Immunogen

An amino acid sequence from the N-terminus of human RFC1 (NSSRKEDDFKQKQPSKKKR) was used as the immunogen for this RFC1 antibody.

Storage

After reconstitution, the RFC1 antibody can be stored for up to one month at 4oC. For long-term, aliquot and store at -20oC. Avoid repeated freezing and thawing.

