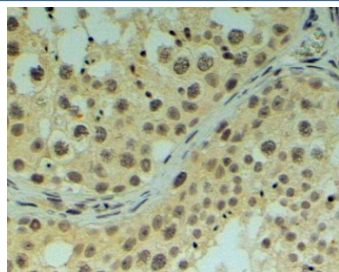


REV1 Antibody (R36334)

Catalog No.	Formulation	Size
R36334-100UG	0.5 mg/ml in 1X TBS, pH7.3, with 0.5% BSA (US sourced) and 0.02% sodium azide	100 ug

Bulk quote request

Availability	1-3 business days
Species Reactivity	Human
Predicted Reactivity	Cow, Dog, Mouse, Rat
Format	Antigen affinity purified
Host	Goat
Clonality	Polyclonal (goat origin)
Isotype	Goat Ig
Purity	Antigen affinity
Gene ID	51455
Applications	Immunohistochemistry (FFPE) : 4-6ug/ml ELISA (peptide) LOD : 1:8000
Limitations	This REV1 antibody is available for research use only.



IHC testing of FFPE human testis with REV1 antibody at 4ug/ml. HIER: steamed with pH9 Tris/EDTA buffer, HRP-staining.

Description

Additional name(s) for this target protein: DNA repair protein REV1

Application Notes

Optimal dilution of the REV1 antibody should be determined by the researcher.

Immunogen

Amino acids VLQQTYGSTLKVT were used as the immunogen for this REV1 antibody.

Storage

Aliquot and store the REV1 antibody at -20oC.