

RETREG1 Antibody / FAM134B / JK-1 (RQ7771)

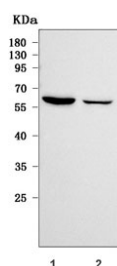
Catalog No.	Formulation	Size
RQ7771	0.5mg/ml if reconstituted with 0.2ml sterile DI water	100 ug

Bulk quote request

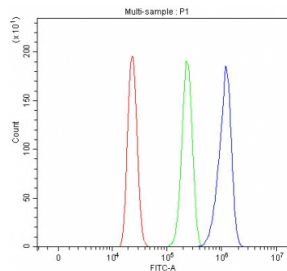
Availability	1-3 business days
Species Reactivity	Human
Format	Antigen affinity purified
Clonality	Polyclonal (rabbit origin)
Isotype	Rabbit IgG
Purity	Antigen affinity purified
Buffer	Lyophilized from 1X PBS with 2% Trehalose
UniProt	Q9H6L5
Applications	Western Blot : 0.5-1ug/ml Immunofluorescence : 5ug/ml Flow Cytometry : 1-3ug/million cells Direct ELISA : 0.1-0.5ug/ml
Limitations	This RETREG1 antibody is available for research use only.



Immunofluorescent staining of FFPE human U-87 MG cells with RETREG1 antibody (red) and Alpha Tubulin mAb (green). HIER: steam section in pH6 citrate buffer for 20 min.



Western blot testing of huma 1) U-87 MG and 2) HeLa cell lysate with RETREG1 antibody. Predicted molecular weight ~55 kDa.



Flow cytometry testing of human HL60 cells with RETREG1 antibody at 1ug/million cells (blocked with goat sera); Red=cells alone, Green=isotype control, Blue= RETREG1 antibody.

Description

The protein encoded by this gene is a cis-Golgi transmembrane protein that may be necessary for the long-term survival of nociceptive and autonomic ganglion neurons. Mutations in this gene are a cause of hereditary sensory and autonomic neuropathy type IIB (HSAN IIB), and this gene may also play a role in susceptibility to vascular dementia. Alternatively spliced transcript variants encoding multiple isoforms have been observed for this gene.

Application Notes

Optimal dilution of the RETREG1 antibody should be determined by the researcher.

Immunogen

E. coli-derived recombinant human protein (amino acids Q131-D446) was used as the immunogen for the RETREG1 antibody.

Storage

After reconstitution, the RETREG1 antibody can be stored for up to one month at 4°C. For long-term, aliquot and store at -20°C. Avoid repeated freezing and thawing.