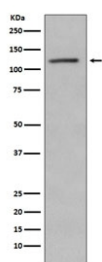


## Retinoblastoma Antibody / Rb1 [clone BHC-18] (RQ5140)

Catalog No.	Formulation	Size
RQ5140	Antibody in PBS with 0.02% sodium azide, 50% glycerol and 0.4-0.5mg/ml BSA	100 ul

[Bulk quote request](#)

Availability	1-2 weeks
Species Reactivity	Human
Format	Purified
Clonality	Rabbit Monoclonal
Isotype	Rabbit IgG
Clone Name	BHC-18
Purity	Affinity purified
UniProt	P06400
Applications	Western Blot : 1:500-1:2000
Limitations	This Retinoblastoma antibody is available for research use only.



Western blot testing of lysate from human Jurkat cells treated with Alkaline Phosphatase, with Retinoblastoma antibody. Predicted molecular weight ~110 kDa.

### Description

The protein encoded by this gene is a negative regulator of the cell cycle and was the first tumor suppressor gene found. The encoded protein also stabilizes constitutive heterochromatin to maintain the overall chromatin structure. The active, hypophosphorylated form of the protein binds transcription factor E2F1. Defects in this gene are a cause of childhood cancer retinoblastoma (RB), bladder cancer, and osteogenic sarcoma. [RefSeq]

### Application Notes

Optimal dilution of the Retinoblastoma antibody should be determined by the researcher.

## **Immunogen**

A synthetic peptide specific to human Retinoblastoma / Rb was used as the immunogen for the Retinoblastoma antibody.

## **Storage**

Store the Retinoblastoma antibody at -20oC.