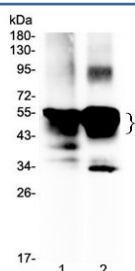


## Retinal S antigen Antibody (R32950)

Catalog No.	Formulation	Size
R32950	0.5mg/ml if reconstituted with 0.2ml sterile DI water	100 ug

**Bulk quote request**

<b>Availability</b>	1-3 business days
<b>Species Reactivity</b>	Human, Mouse, Rat
<b>Format</b>	Antigen affinity purified
<b>Clonality</b>	Polyclonal (rabbit origin)
<b>Isotype</b>	Rabbit IgG
<b>Purity</b>	Antigen affinity
<b>Buffer</b>	Lyophilized from 1X PBS with 2.5% BSA, 0.025% sodium azide
<b>UniProt</b>	P10523
<b>Applications</b>	Western Blot : 0.5-1ug/ml Direct ELISA (recombinant Human Protein) : 0.1-0.5ug/ml (BSA-free format available)
<b>Limitations</b>	This Retinal S antigen antibody is available for research use only.



Western blot testing of 1) rat eye ball and 2) mouse eye ball lysate with Retinal S antigen antibody at 0.5ug/ml. Expected molecular weight ~48 kDa, observed at 45-55 kDa.

## Description

S-arrestin is a protein that in humans is encoded by the SAG gene. Members of arrestin/beta-arrestin protein family are thought to participate in agonist-mediated desensitization of G-protein-coupled receptors and cause specific dampening of cellular responses to stimuli such as hormones, neurotransmitters, or sensory signals. S-arrestin, also known as S-antigen, is a major soluble photoreceptor protein that is involved in desensitization of the photoactivated transduction cascade. It is expressed in the retina and the pineal gland and inhibits coupling of rhodopsin to transducin in vitro. Additionally, S-arrestin is highly antigenic, and is capable of inducing experimental autoimmune uveoretinitis. Mutations in this gene have been associated with Oguchi disease, a rare autosomal recessive form of night blindness.

## Application Notes

Optimal dilution of the Retinal S antigen antibody should be determined by the researcher.

## Immunogen

A recombinant human protein corresponding to amino acids R193-E405 was used as the immunogen for the Retinal S antigen antibody.

## Storage

After reconstitution, the Retinal S antigen antibody can be stored for up to one month at 4oC. For long-term, aliquot and store at -20oC. Avoid repeated freezing and thawing.