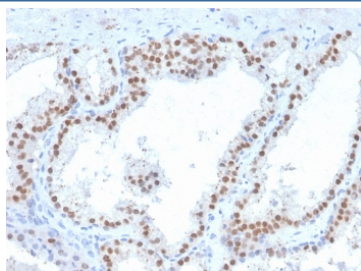


RET Antibody / c-RET [clone RET/2663] (V8277)

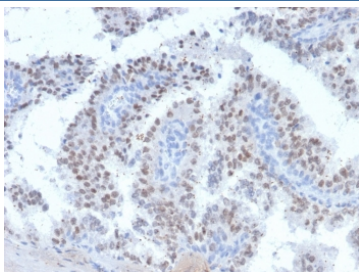
Catalog No.	Formulation	Size
V8277-100UG	0.2 mg/ml in 1X PBS with 0.1 mg/ml BSA (US sourced) and 0.05% sodium azide	100 ug
V8277-20UG	0.2 mg/ml in 1X PBS with 0.1 mg/ml BSA (US sourced) and 0.05% sodium azide	20 ug
V8277SAF-100UG	1 mg/ml in 1X PBS; BSA free, sodium azide free	100 ug

Bulk quote request

Availability	1-3 business days
Species Reactivity	Human
Format	Purified
Clonality	Monoclonal (mouse origin)
Isotype	Mouse IgG2b, kappa
Clone Name	RET/2663
Purity	Protein G affinity chromatography
UniProt	P07949
Applications	ELISA (order BSA-free Format For Coating) : Immunohistochemistry (FFPE) : 1-2ug/ml
Limitations	This RET antibody is available for research use only.



IHC staining of FFPE human prostate carcinoma with RET antibody (clone RET/2663).
HIER: boil tissue sections in pH 9 10mM Tris with 1mM EDTA for 20 min and allow to cool before testing.

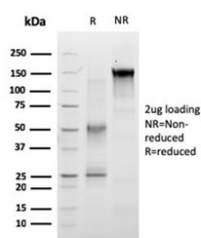


IHC staining of FFPE human prostate carcinoma with RET antibody (clone RET/2663).
 HIER: boil tissue sections in pH 9 10mM Tris with 1mM EDTA for 20 min and allow to cool before testing.

Human Protein Microarray Specificity Validation



Analysis of HuProt(TM) microarray containing more than 19,000 full-length human proteins using RET antibody (clone RET/2663). These results demonstrate the foremost specificity of the RET/2663 mAb. Z- and S- score: The Z-score represents the strength of a signal that an antibody (in combination with a fluorescently-tagged anti-IgG secondary Ab) produces when binding to a particular protein on the HuProt(TM) array. Z-scores are described in units of standard deviations (SD's) above the mean value of all signals generated on that array. If the targets on the HuProt(TM) are arranged in descending order of the Z-score, the S-score is the difference (also in units of SD's) between the Z-scores. The S-score therefore represents the relative target specificity of an Ab to its intended target.



SDS-PAGE analysis of purified, BSA-free RET antibody (clone RET/2663) as confirmation of integrity and purity.

Description

The Ret proto-oncogene is structurally related to the growing family of tyrosine kinase transmembrane receptors and is involved in GDNF signaling. RET expression is reported in several regions of the central nervous system; in the developing cranial nerve ganglia and a subset of cells within dorsal root ganglia, in motor neurons in the spinal cord and hindbrain, in neuro-retina and the growing tips of the renal collecting ducts in developing kidney. Alterations in RET gene are associated with diseases including papillary thyroid carcinoma, multiple endocrine neoplasia (type 2A and 2B), familial medullary thyroid carcinoma, and a congenital developmental disorder known as Hirschsprung's disease.

Application Notes

Optimal dilution of the RET antibody should be determined by the researcher.

Immunogen

A recombinant human partial protein (amino acids 702-848) was used as the immunogen for this RET antibody.

Storage

Store the RET antibody at 2-8°C (with azide) or aliquot and store at -20°C or colder (without azide).

