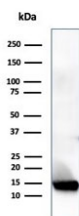


Resistin Antibody / RETN [clone RETN/4324] (V9419)

Catalog No.	Formulation	Size
V9419-100UG	0.2 mg/ml in 1X PBS with 0.1 mg/ml BSA (US sourced), 0.05% sodium azide	100 ug
V9419-20UG	0.2 mg/ml in 1X PBS with 0.1 mg/ml BSA (US sourced), 0.05% sodium azide	20 ug
V9419SAF-100UG	1 mg/ml in 1X PBS; BSA free, sodium azide free	100 ug

[Bulk quote request](#)

Availability	1-3 business days
Species Reactivity	Human
Format	Purified
Clonality	Monoclonal (mouse origin)
Isotype	Mouse IgG2b, kappa
Clone Name	RETN/4324
Purity	Protein A/G affinity
UniProt	Q9HD89
Localization	Secreted
Applications	Western Blot : 2-4 ug/ml
Limitations	This Resistin antibody is available for research use only.



Western blot analysis of human heart tissue lysate using Resistin antibody (clone RETN/4324). Predicted molecular weight ~11 kDa.

Description

The cysteine-rich, adipose tissue-specific, secretory factor resistin (resistance to Insulin) also known as ADSF, is a secreted hormone that potentially links obesity to diabetes. Resistin is rich in serine and cysteine residues and contains a unique cysteine repeat motif. Resistin and the resistin-like molecules share the characteristic cysteine composition and other signature features. Resistin-like expression is highest in proliferative epithelial cells and is markedly increased in

tumors, suggesting a role in intestinal proliferation.

Application Notes

Optimal dilution of the Resistin antibody should be determined by the researcher.

Immunogen

A portion of amino acids 19-108 was used as the immunogen for the Resistin antibody.

Storage

Aliquot the Resistin antibody and store frozen at -20oC or colder. Avoid repeated freeze-thaw cycles.