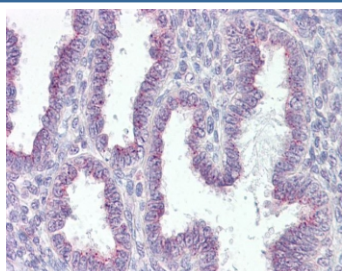


## RER1 Antibody (R34188)

Catalog No.	Formulation	Size
R34188-100UG	0.5 mg/ml in 1X TBS, pH7.3, with 0.5% BSA (US sourced) and 0.02% sodium azide	100 ug

[Bulk quote request](#)

Availability	1-3 business days
Species Reactivity	Human
Format	Antigen affinity purified
Host	Goat
Clonality	Polyclonal (goat origin)
Isotype	Goat Ig
Purity	Antigen affinity
Gene ID	11079
Applications	Immunohistochemistry (FFPE) : 3.75ug/ml ELISA (peptide) LOD : 1:128000
Limitations	This RER1 antibody is available for research use only.



IHC testing of FFPE human uterus tissue with RER1 antibody at 3.75ug/ml. Required HIER: steamed antigen retrieval with pH6 citrate buffer; AP-staining.

## Description

Additional name(s) for this target protein: Retention in endoplasmic reticulum 1

## Application Notes

Optimal dilution of the RER1 antibody should be determined by the researcher.

1. Reported to specifically stain human frontal cortex by IHC.

## Immunogen

Amino acids HGKRRYRGKEDAGK were used as the immunogen for this RER1 antibody.

## Storage

Aliquot and store the RER1 antibody at -20oC.