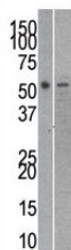


Reptin Antibody / RUVBL2 (F40108)

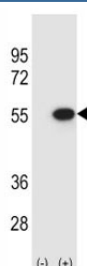
| Catalog No. | Formulation | Size |
|---------------|--|---------|
| F40108-0.4ML | In 1X PBS, pH 7.4, with 0.09% sodium azide | 0.4 ml |
| F40108-0.08ML | In 1X PBS, pH 7.4, with 0.09% sodium azide | 0.08 ml |

[Bulk quote request](#)

| | |
|-----------------------------|--|
| Availability | 1-3 business days |
| Species Reactivity | Human, Mouse |
| Predicted Reactivity | Bovine, Xenopus |
| Format | Purified |
| Host | Rabbit |
| Clonality | Polyclonal (rabbit origin) |
| Isotype | Rabbit Ig |
| Purity | Purified |
| UniProt | Q9Y230 |
| Applications | Western Blot : 1:1000 |
| Limitations | This Reptin antibody is available for research use only. |



Reptin antibody used in western blot to detect RUVBL2 in mouse kidney (left) and human SK-BR-3 (right) lysate. Expected molecular weight: 48-51 kDa.



Western blot analysis of Reptin antibody and 293 cell lysate (2 ug/lane) either nontransfected (Lane 1) or transiently transfected (2) with the RUVBL2 gene.

Description

This gene encodes the second human homologue of the bacterial RuvB gene. Bacterial RuvB protein is a DNA helicase essential for homologous recombination and DNA double-strand break repair. Functional analysis showed that this gene product has both ATPase and DNA helicase activities. This gene is physically linked to the CGB/LHB gene cluster on chromosome 19q13.3, and is very close (55 nt) to the LHB gene, in the opposite orientation.

Application Notes

Titration of the Reptin antibody may be required due to differences in protocols and secondary/substrate sensitivity.

Immunogen

A portion of amino acids 400-430 from the human protein was used as the immunogen for this Reptin antibody.

Storage

Aliquot the Reptin antibody and store frozen at -20oC or colder. Avoid repeated freeze-thaw cycles.