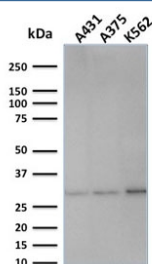


## Replication Protein A2 Antibody / RPA32 [clone SPM316] (V8066)

Catalog No.	Formulation	Size
V8066-100UG	0.2 mg/ml in 1X PBS with 0.1 mg/ml BSA (US sourced) and 0.05% sodium azide	100 ug
V8066-20UG	0.2 mg/ml in 1X PBS with 0.1 mg/ml BSA (US sourced) and 0.05% sodium azide	20 ug
V8066SAF-100UG	1 mg/ml in 1X PBS; BSA free, sodium azide free	100 ug

[Bulk quote request](#)

<b>Availability</b>	1-3 business days
<b>Species Reactivity</b>	Human
<b>Format</b>	Purified
<b>Host</b>	Mouse
<b>Clonality</b>	Monoclonal (mouse origin)
<b>Isotype</b>	Mouse IgG2b, kappa
<b>Clone Name</b>	SPM316
<b>Purity</b>	Protein G affinity chromatography
<b>UniProt</b>	P15927
<b>Applications</b>	Western Blot : 1-2ug/ml
<b>Limitations</b>	This Replication Protein A2 antibody is available for research use only.



Western blot testing of human samples with Replication Protein A2 antibody (clone SPM316). Expected molecular weight ~32 kDa.

## Description

Recognizes a protein of 34kDa, identified as a subunit of Replication Protein A (RPA) (also known as human single-stranded DNA binding protein, or HSSB). RPA from human cells is a stable heterotrimer of 70kDa, 32-34kDa, and

11-14kDa subunits (RPA70, RPA32, and RPA14 respectively). It is involved in DNA replication, repair, and recombination. RPA is required for the SV40 large tumor antigen-catalyzed unwinding of SV40 DNA and stimulates DNA polymerase (pol) alpha and delta. RPA34 is phosphorylated at the G1/S boundary of the cell cycle or upon exposure of cells to DNA damage-inducing agents including ionizing and UV radiation.

## **Application Notes**

Optimal dilution of the Replication Protein A2 antibody should be determined by the researcher.

## **Immunogen**

A recombinant human full-length protein was used as the immunogen for this Replication Protein A2 antibody.

## **Storage**

Store the Replication Protein A2 antibody at 2-8oC (with azide) or aliquot and store at -20oC or colder (without azide).