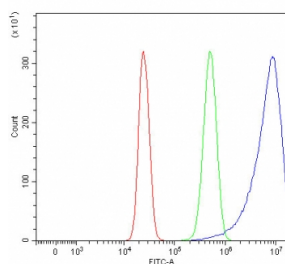


REP15 Antibody / Rab15 effector protein (RQ7829)

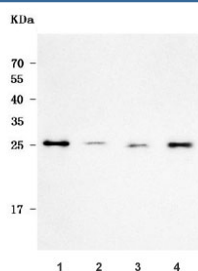
Catalog No.	Formulation	Size
RQ7829	0.5mg/ml if reconstituted with 0.2ml sterile DI water	100 ug

Bulk quote request

Availability	1-3 business days
Species Reactivity	Human
Format	Antigen affinity purified
Clonality	Polyclonal (rabbit origin)
Isotype	Rabbit IgG
Purity	Antigen affinity purified
Buffer	Lyophilized from 1X PBS with 2% Trehalose
UniProt	Q6BDI9
Applications	Western Blot : 0.5-1ug/ml Flow Cytometry : 1-3ug/million cells Direct ELISA : 0.1-0.5ug/ml
Limitations	This REP15 antibody is available for research use only.



Flow cytometry testing of human HepG2 cells with REP15 antibody at 1ug/million cells (blocked with goat sera); Red=cells alone, Green=isotype control, Blue= REP15 antibody.



Western blot testing of human 1) U-87 MG, 2) Caco-2, 3) U-2 OS and 4) U-251 cell lysate with REP15 antibody. Predicted molecular weight ~27 kDa.

Description

The protein encoded by this intronless gene interacts with GTP-bound Rab15 and is involved in recycling of transferrin receptor from the endocytic recycling compartment to the cell surface.

Application Notes

Optimal dilution of the REP15 antibody should be determined by the researcher.

Immunogen

E. coli-derived recombinant human protein (amino acids Q3-L236) was used as the immunogen for the REP15 antibody.

Storage

After reconstitution, the REP15 antibody can be stored for up to one month at 4°C. For long-term, aliquot and store at -20°C. Avoid repeated freezing and thawing.