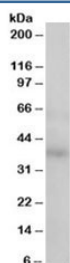


Renin Receptor Antibody (R35926)

Catalog No.	Formulation	Size
R35926-100UG	0.5 mg/ml in 1X TBS, pH7.3, with 0.5% BSA (US sourced) and 0.02% sodium azide	100 ug

[Bulk quote request](#)

Availability	1-3 business days
Species Reactivity	Human
Predicted Reactivity	Rat
Format	Antigen affinity purified
Host	Goat
Clonality	Polyclonal (goat origin)
Isotype	Goat Ig
Purity	Antigen affinity
Gene ID	10159
Applications	Western Blot : 0.5-1.5ug/ml Immunohistochemistry (FFPE) : suitable ELISA (peptide) LOD : 1:16000
Limitations	This Renin receptor antibody is available for research use only.



Western blot testing of human kidney lysate with Renin receptor antibody at 0.5ug/ml.
Predicted molecular weight: ~39kDa.

Description

Additional name(s) for this target protein: ATP6AP2; ATP6IP2; ATPase, H⁺ transporting, lysosomal interacting protein 2

Application Notes

Optimal dilution of the Renin receptor antibody should be determined by the researcher.

Immunogen

Amino acids SIIYRMTNQKIRMD were used as the immunogen for this Renin receptor antibody.

Storage

Aliquot and store the Renin receptor antibody at -20oC.