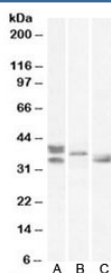


## Renalase Antibody (R36338)

Catalog No.	Formulation	Size
R36338-100UG	0.5 mg/ml in 1X TBS, pH7.3, with 0.5% BSA (US sourced) and 0.02% sodium azide	100 ug

[Bulk quote request](#)

Availability	1-3 business days
Species Reactivity	Human, Mouse, Rat
Predicted Reactivity	Cow, Dog
Format	Antigen affinity purified
Clonality	Polyclonal (goat origin)
Isotype	Goat Ig
Purity	Antigen affinity
Gene ID	55328
Applications	Western Blot : 0.1-0.3ug/ml ELISA (peptide) LOD : 1:64000
Limitations	This Renalase antibody is available for research use only.



Western blot testing of A) human, B) mouse and C) rat heart lysates with Renalase antibody at 0.5ug/ml. Molecular weight: observed in human/mouse/rat samples between 33~38 kDa.

## Description

Additional name(s) for this target protein: RNLS; C10orf59; chromosome 10 open reading frame 59

## Application Notes

Optimal dilution of the Renalase antibody should be determined by the researcher.

## Immunogen

Amino acids VSIDNKKRNI were used as the immunogen for this Renalase antibody. This sequence is common to human isoforms 1 (~38kDa) and 2 (~35kDa.)

## Storage

Aliquot and store the Renalase antibody at -20oC.