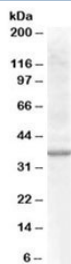


Renalase Antibody (R35307)

Catalog No.	Formulation	Size
R35307-100UG	0.5 mg/ml in 1X TBS, pH7.3, with 0.5% BSA (US sourced) and 0.02% sodium azide	100 ug

[Bulk quote request](#)

Availability	1-3 business days
Species Reactivity	Human, Mouse, Rat
Format	Antigen affinity purified
Host	Goat
Clonality	Polyclonal (goat origin)
Isotype	Goat Ig
Purity	Antigen affinity
Gene ID	55328
Applications	Western Blot : 0.5-1.5ug/ml ELISA (peptide) LOD : 1:32000
Limitations	This Renalase antibody is available for research use only.



Western blot testing of rat kidney lysate with Renalase antibody at 0.5ug/ml. Predicted molecular weight (rat): ~35kDa.

Description

Additional name(s) for this target protein: Chromosome 10 open reading frame 59; C10orf59

Application Notes

Optimal dilution of the Renalase antibody should be determined by the researcher.

Immunogen

Amino acids QINLRDDKWEVSKQ were used as the immunogen for this Renalase antibody.

Storage

Aliquot and store the Renalase antibody at -20oC.