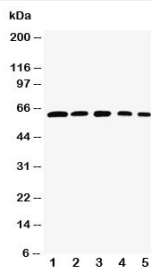


RelB Antibody (R30901)

Catalog No.	Formulation	Size
R30901	0.5mg/ml if reconstituted with 0.2ml sterile DI water	100 ug

[Bulk quote request](#)

Availability	1-3 business days
Species Reactivity	Human, Mouse, Rat
Format	Antigen affinity purified
Host	Rabbit
Clonality	Polyclonal (rabbit origin)
Isotype	Rabbit IgG
Purity	Antigen affinity
Buffer	Lyophilized from 1X PBS with 2.5% BSA and 0.025% sodium azide/thimerosal
UniProt	Q01201
Applications	Western Blot : 0.5-1ug/ml
Limitations	This RelB antibody is available for research use only.



Western blot testing of RelB antibody and Lane 1: rat testis; 2: (h) HeLa; 3: (m) NIH3T3; 4: (h) Raji; 5: (m) HEPA cell lysate. Predicted size: 62-70KD

Description

RelB (v-rel reticuloendotheliosis viral oncogene homolog B) is also known as IREL. By RT-PCR and immunocytochemical analyses, Clark et al.(1999) showed that protein expression correlated with dendritic cell activation. NF-kappa-B-inducing kinase is required for osteoclastogenesis in response to pathologic stimuli. Vaira et al.(2008) found that overexpression of RelB, but not RelA, rescued differentiation of mouse *Nik*^{-/-} osteoclast precursors, indicating that blockade of the alternative NF-kappa-B pathway, rather than the classic pathway, is responsible for the osteoclastogenic defect in the absence of *Nik*. Using RelB ^{-/-} mice, they showed that the protein itself was required for RankL-induced osteoclastogenesis in vitro and for TNF-induced bone resorption in vivo. Both RelB ^{-/-} and *Nik*^{-/-} mice were resistant to

tumor-mediated osteolysis. Vaira et al.(2008) concluded that the alternative NF-kappa-B pathway, via RelB, plays an essential and unique role in RankL signaling toward osteoclast development.

Application Notes

The stated application concentrations are suggested starting amounts. Titration of the RelB antibody may be required due to differences in protocols and secondary/substrate sensitivity.

Immunogen

Amino acids 393-413 (LPFTYLPRDHDSYGVDKRRKR-human) were used as the immunogen for this RelB antibody (100% mouse homology).

Storage

After reconstitution, the Rel B antibody can be stored for up to one month at 4oC. For long-term, aliquot and store at -20oC. Avoid repeated freezing and thawing.