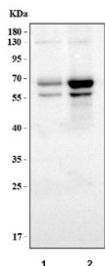


Rel-B Antibody (R32178)

Catalog No.	Formulation	Size
R32178	0.5mg/ml if reconstituted with 0.2ml sterile DI water	100 ug

[Bulk quote request](#)

Availability	1-3 business days
Species Reactivity	Human
Format	Antigen affinity purified
Host	Rabbit
Clonality	Polyclonal (rabbit origin)
Isotype	Rabbit IgG
Purity	Antigen affinity
Buffer	Lyophilized from 1X PBS with 2.5% BSA and 0.025% sodium azide
UniProt	Q01201
Applications	Western Blot : 0.5-1ug/ml
Limitations	This Rel-B antibody is available for research use only.



Western blot testing of human 1) Ramos and 2) Daudi lysate with Rel-B antibody. Expected molecular weight ~62 kDa, can be observed as a ~57/68 kDa doublet.

Description

RELB (v-rel reticuloendotheliosis viral oncogene homolog B) is also known as IREL. The International Radiation Hybrid Mapping Consortium assigned the RELB gene to chromosome 19. By RT-PCR and immunocytochemical analyses, Clark et al. (1999) showed that RELB expression correlated with dendritic cell activation. NF-kappa-B-inducing kinase is required for osteoclastogenesis in response to pathologic stimuli. Vaira et al. (2008) found that overexpression of Relb, but not Rela, rescued differentiation of mouse *Nik*^{-/-} osteoclast precursors, indicating that blockade of the alternative NF-kappa-B pathway, rather than the classical NF-kappa-B pathway, is responsible for the osteoclastogenic defect in the absence of *Nik*. Using *Relb*^{-/-} mice, they showed that *Relb* itself was required for Rankl-induced osteoclastogenesis in

vitro and for TNF-induced bone resorption in vivo. Both Relb ^{-/-} and Nik ^{-/-} mice were resistant to tumor-mediated osteolysis. Vaira et al. (2008) concluded that the alternative NF-kappa-B pathway, via RELB, plays an essential and unique role in RANKL signaling toward osteoclast development.

Application Notes

Optimal dilution of the Rel-B antibody should be determined by the researcher.

Immunogen

Amino acids RHSFNNLGIQCVRKKEIEAAIERKIQLGIDPYNA of human RELB were used as the immunogen for the Rel-B antibody.

Storage

After reconstitution, the Rel-B antibody can be stored for up to one month at 4oC. For long-term, aliquot and store at -20oC. Avoid repeated freezing and thawing.

References (1)