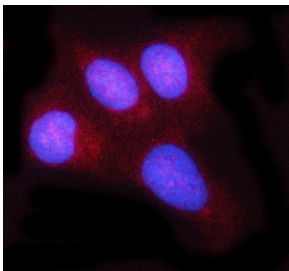


REL Antibody / c-Rel (RQ7814)

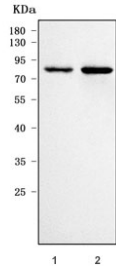
Catalog No.	Formulation	Size
RQ7814	0.5mg/ml if reconstituted with 0.2ml sterile DI water	100 ug

Bulk quote request

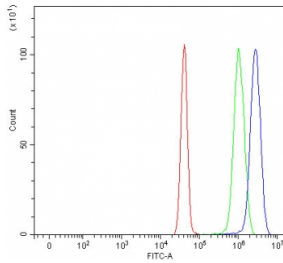
Availability	1-3 business days
Species Reactivity	Human
Format	Antigen affinity purified
Host	Rabbit
Clonality	Polyclonal (rabbit origin)
Isotype	Rabbit IgG
Purity	Antigen affinity purified
Buffer	Lyophilized from 1X PBS with 2% Trehalose
UniProt	Q04864
Localization	Nuclear, cytoplasmic
Applications	Western Blot : 0.5-1ug/ml Immunofluorescence : 5ug/ml Flow Cytometry : 1-3ug/million cells Direct ELISA : 0.1-0.5ug/ml
Limitations	This REL antibody is available for research use only.



Immunofluorescent staining of FFPE human U-2 OS cells with REL antibody (red) and DAPI nuclear stain (blue). HIER: steam section in pH6 citrate buffer for 20 min.



Western blot testing of human 1) Raji and 2) Daudi cell lysate with REL antibody.
 Predicted molecular weight ~69 kDa.



Flow cytometry testing of human U-251 cells with REL antibody at 1ug/million cells (blocked with goat sera); Red=cells alone, Green=isotype control, Blue= REL antibody.

Description

The proto-oncogene c-Rel is a protein that in humans is encoded by the REL gene. This gene encodes a protein that belongs to the Rel homology domain/immunoglobulin-like fold, plexin, transcription factor (RHD/IPT) family. Members of this family regulate genes involved in apoptosis, inflammation, the immune response, and oncogenic processes. This proto-oncogene plays a role in the survival and proliferation of B lymphocytes. Mutation or amplification of this gene is associated with B-cell lymphomas, including Hodgkin's lymphoma. Single nucleotide polymorphisms in this gene are associated with susceptibility to ulcerative colitis and rheumatoid arthritis. Alternative splicing results in multiple transcript variants encoding different isoforms.

Application Notes

Optimal dilution of the REL antibody should be determined by the researcher.

Immunogen

E. coli-derived recombinant human protein (amino acids K116-D610) was used as the immunogen for the REL antibody.

Storage

After reconstitution, the REL antibody can be stored for up to one month at 4°C. For long-term, aliquot and store at -20°C. Avoid repeated freezing and thawing.