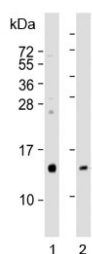


## REG3G Antibody / Regenerating islet-derived protein 3-gamma (F54247)

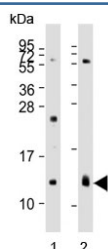
Catalog No.	Formulation	Size
F54247-0.4ML	In 1X PBS, pH 7.4, with 0.09% sodium azide	0.4 ml
F54247-0.08ML	In 1X PBS, pH 7.4, with 0.09% sodium azide	0.08 ml

[Bulk quote request](#)

<b>Availability</b>	1-3 business days
<b>Species Reactivity</b>	Human
<b>Format</b>	Purified
<b>Host</b>	Rabbit
<b>Clonality</b>	Polyclonal (rabbit origin)
<b>Isotype</b>	Rabbit Ig
<b>Purity</b>	SAS precipitation
<b>UniProt</b>	Q6UW15
<b>Gene ID</b>	130120
<b>Applications</b>	Western Blot : 1:500-1:2000 Immunohistochemistry (FFPE) : 1:25
<b>Limitations</b>	This REG3G antibody is available for research use only.



Western blot testing of human 1) kidney and 2) pancreas lysate with REG3G antibody.  
Expected molecular weight: 15-19 kDa.



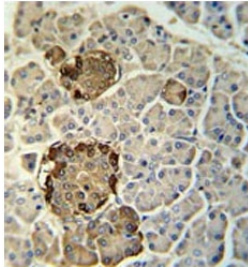
Western blot testing of human 1) kidney and 2) lung lysate with REG3G antibody.  
Expected molecular weight: 15-19 kDa.

kDa  
70-  
55-  
35-  
25-  
15-  
10-

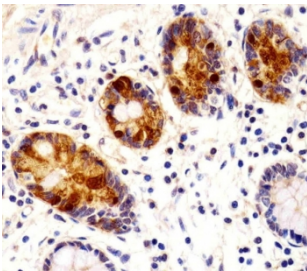
Western blot testing of human SH-SY5Y cell lysate with REG3G antibody. Expected molecular weight: 15-19 kDa.

kDa  
55-  
36-  
28-  
17-  
10-

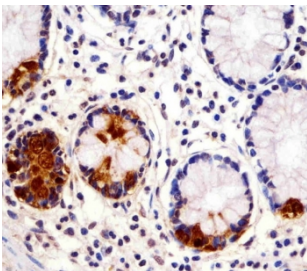
Western blot testing of mouse small intestine lysate with REG3G antibody. Expected molecular weight: 15-19 kDa.



IHC testing of FFPE human pancreas tissue with REG3G antibody. HIER: steam section in pH6 citrate buffer for 20 min and allow to cool prior to staining.



IHC testing of FFPE human small intestine tissue with REG3G antibody. HIER: steam section in pH6 citrate buffer for 20 min and allow to cool prior to staining.



IHC testing of FFPE human small intestine tissue with REG3G antibody. HIER: steam section in pH6 citrate buffer for 20 min and allow to cool prior to staining.

## Description

REG3G might be a stress protein involved in the control of bacterial proliferation (By similarity).

## Application Notes

The stated application concentrations are suggested starting points. Titration of the REG3G antibody may be required due to differences in protocols and secondary/substrate sensitivity.

## **Immunogen**

A portion of amino acids 89-116 from the human protein were used as the immunogen for the REG3G antibody .

## **Storage**

Aliquot the REG3G antibody and store frozen at -20oC or colder. Avoid repeated freeze-thaw cycles.