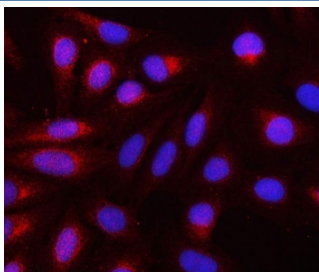


REEP3 Antibody / Receptor expression-enhancing protein 3 (RQ8252)

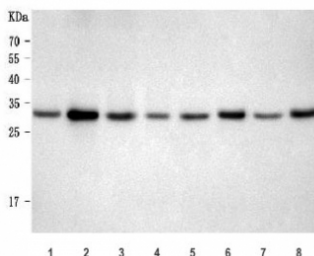
Catalog No.	Formulation	Size
RQ8252	0.5mg/ml if reconstituted with 0.2ml sterile DI water	100 ug

Bulk quote request

Availability	1-3 business days
Species Reactivity	Human, Mouse, Rat
Format	Antigen affinity purified
Host	Rabbit
Clonality	Polyclonal (rabbit origin)
Isotype	Rabbit IgG
Purity	Antigen affinity purified
Buffer	Lyophilized from 1X PBS with 2% Trehalose
UniProt	Q6NUK4
Localization	Cytoplasm
Applications	Western Blot : 0.5-1ug/ml Immunofluorescence : 5ug/ml
Limitations	This REEP3 antibody is available for research use only.



Immunofluorescent staining of FFPE human U-2 OS cells with REEP3 antibody (red) and DAPI nuclear stain (blue). HIER: steam section in pH6 citrate buffer for 20 min.



Western blot testing of 1) human HaCaT, 2) human PC-3, 3) human A431, 4) human SiHa, 5) rat brain, 6) rat PC-12, 7) mouse brain and 8) mouse NIH 3T3 cell lysate with REEP3 antibody. Predicted molecular weight ~29 kDa (two isoforms).

Description

Predicted to enable microtubule binding activity. Involved in mitotic nuclear membrane reassembly. Predicted to be integral component of membrane. Predicted to be active in cytoplasmic microtubule; endoplasmic reticulum membrane; and endoplasmic reticulum tubular network.

Application Notes

Optimal dilution of the REEP3 antibody should be determined by the researcher.

Immunogen

Amino acids KEVRYGSLKYKVKKRPQVYFC were used as the immunogen for the REEP3 antibody.

Storage

After reconstitution, the REEP3 antibody can be stored for up to one month at 4oC. For long-term, aliquot and store at -20oC. Avoid repeated freezing and thawing.