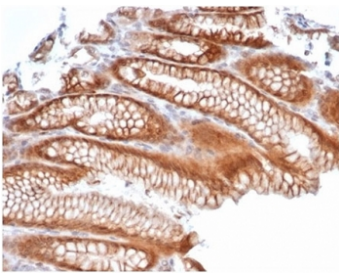


Reelin Antibody / RELN [clone RELN/4498] (V9527)

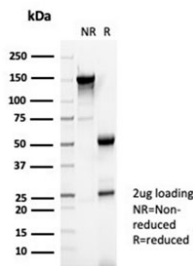
Catalog No.	Formulation	Size
V9527-100UG	0.2 mg/ml in 1X PBS with 0.1 mg/ml BSA (US sourced), 0.05% sodium azide	100 ug
V9527-20UG	0.2 mg/ml in 1X PBS with 0.1 mg/ml BSA (US sourced), 0.05% sodium azide	20 ug
V9527SAF-100UG	1 mg/ml in 1X PBS; BSA free, sodium azide free	100 ug

Bulk quote request

Availability	1-3 business days
Species Reactivity	Human
Format	Purified
Host	Mouse
Clonality	Monoclonal (mouse origin)
Isotype	Mouse IgG2b
Clone Name	RELN/4498
Purity	Protein A/G affinity
UniProt	P78509
Localization	Cytoplasm
Applications	Immunohistochemistry (FFPE) : 1-2ug/ml
Limitations	This Reelin antibody is available for research use only.



IHC staining of FFPE human kidney tissue with Reelin antibody (clone RELN/4498).
 HIER: boil tissue sections in pH 9 10mM Tris with 1mM EDTA for 20 min and allow to cool before testing.



SDS-PAGE analysis of purified, BSA-free Reelin antibody (clone RELN/4498) as confirmation of integrity and purity.

Description

Reelin (or Reln) is a large glycoprotein that is secreted by Cajal-Retzius cells in the forebrain and by granule neurons in the cerebellum. Reelin was shown to be mutated in reeler mice, a mutation that is associated with widespread disruption of laminated regions of the brain, leading to impaired motor coordination, tremors and ataxia. Reelin protein expression is complex and changes throughout development. Reelin appears to function upstream of Dab1, in a signaling pathway that controls cell positioning in the developing brain, and is also thought to be a direct effector of the neurotrophin BDNF.

Application Notes

Optimal dilution of the Reelin antibody should be determined by the researcher.

Immunogen

A portion of amino acids 1796-2115 was used as the immunogen for the Reelin antibody.

Storage

Aliquot the Reelin antibody and store frozen at -20oC or colder. Avoid repeated freeze-thaw cycles.